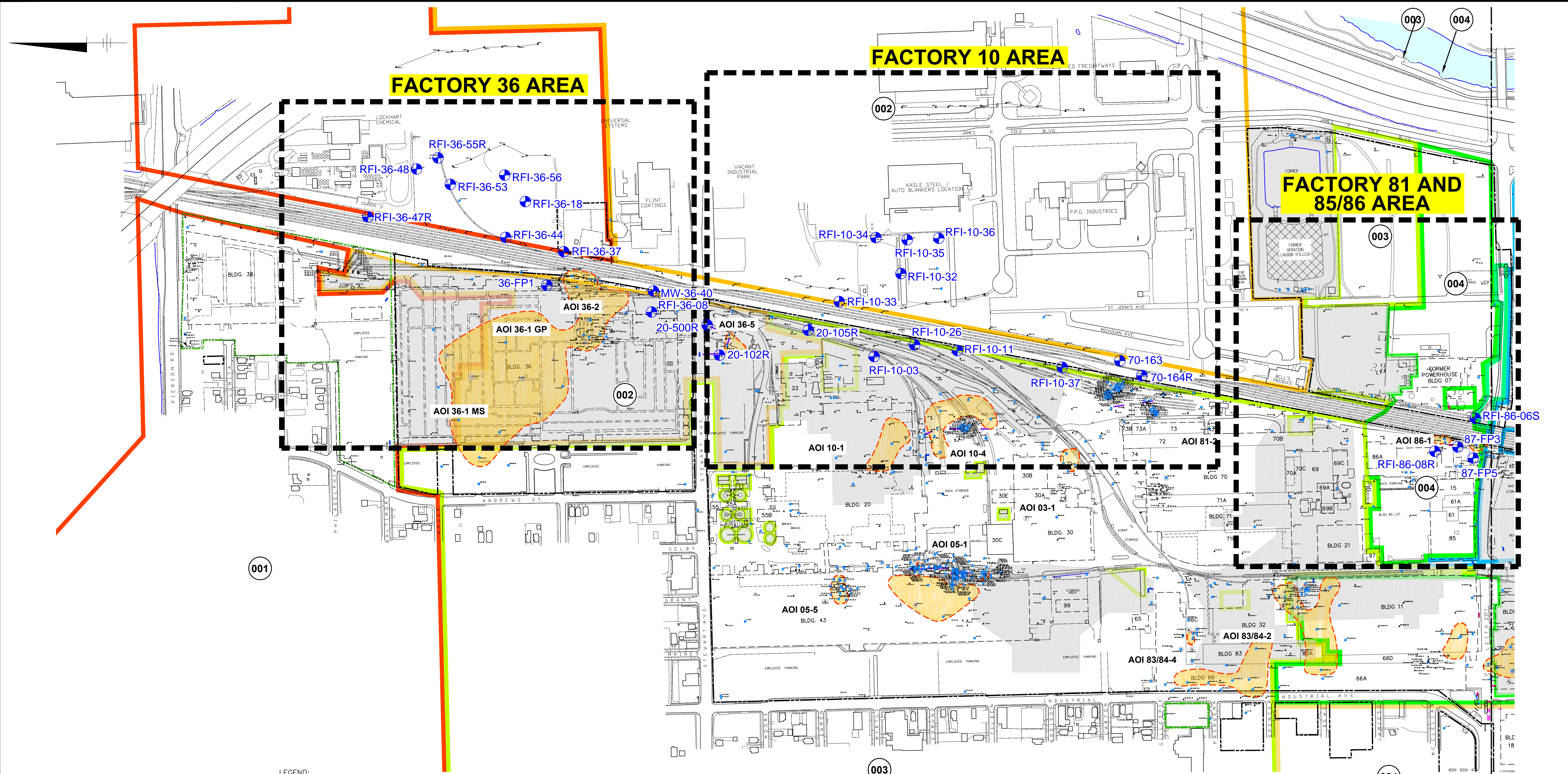
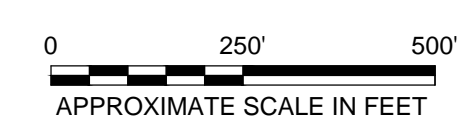


CITY: SYRACUSE DIV/GRP: ENV DB: A.SANCHEZ LD: ALS/GMS PIC: C.S.PETERS PM: C.KIKER TM: C.KIKER LTR: ON=OFF=REF Z:\ENVCAD\SYRACUSE\ACT\B064410\20170070164410701B01.dwg LAYOUT: 5 SAVED: 3/14/2017 12:13 PM ACADVER: 19.1S (LMS TECH) PAGES: 5 PLOTSTYLETABLE: ... PLOTTED: 3/14/2017 5:20 PM BY: SANCHEZ, ADRIAN



- LEGEND:
- PROPERTY BOUNDARY
  - APPROXIMATE KNOWN EXTENT OF MEASURABLE LNAPL (>0.1 FEET)
  - AREAS WHERE STORM SEWER HAS BEEN BULKHEADED
  - 001 OUTFALL DRAINAGE AREA AND NUMBER
  - GROUNDWATER MONITORING IMPACT AREA
  - RFI-36-48 MONITORING WELL LOCATION FOR GROUNDWATER MONITORING PROGRAM



NORTH END SOUTH END

- NOTES:
- BASE MAP INFORMATION FROM A SURVEY BY BMJ, INC. DATED APRIL 2001, AT A SCALE OF 1:100. AERIAL IMAGE FROM ARCGIS 10 ONLINE MAPPING, ACCESSED 6/12/2013.
  - BASED ON INFORMATION AVAILABLE AS OF JUNE 2016.

RACER TRUST  
BUICK CITY  
FLINT, MICHIGAN

**2017  
GROUNDWATER SAMPLING  
LOCATIONS - NORTHEND**

**ARCADIS** Design & Consultancy  
for natural and built assets

FIGURE  
**1**