



**Atherton Road Industrial Land, Windiate Lots, Linden Road Landfill, Flint
Warehouse Facility, and Genesee Industrial Land
Genesee County Public Information Meeting
June 25, 2013**

Atherton Road (Great Lakes Technology Center landfill & former die storage area)

All cleanup activities have been and will continue to be developed in consultation with and approved by the MDEQ. Initial Site remediation funding was approximately \$200,000 and approximately \$7,000 remains available.

Completed activities include:

- Several phases of soil and groundwater investigation; soil and groundwater contaminants of concern include BTEX, lead and barium
- Two or more feet of fill sand, cinders, and a slag-like material present over most of the Site
- Excavation and off-site disposal of approximately 2,700 tons of lead and BTEX contaminated soils

Final remedial measures include:

- Restricting access to the Site, limiting future use of the entire Site to non-residential, requiring site-wide contaminated soil management, incorporating site-wide vapor intrusion exposure restrictions, health and safety requirements for intrusive activities, and prohibiting use of groundwater.

Windiate/Pengelly

Includes residential parcels (no remediation required), and parcels subject to cleanup. Remediation activities (capping) were completed in the late 1990s. Some parcels functionally part of Windiate Park. Pengelly Street parcels require limited maintenance activity, including inspections, maintaining cover, and mowing grass. Prior to the GM bankruptcy parcels adjacent to Windiate Park were targeted for transfer to the City of Flint.

Linden Road Landfill

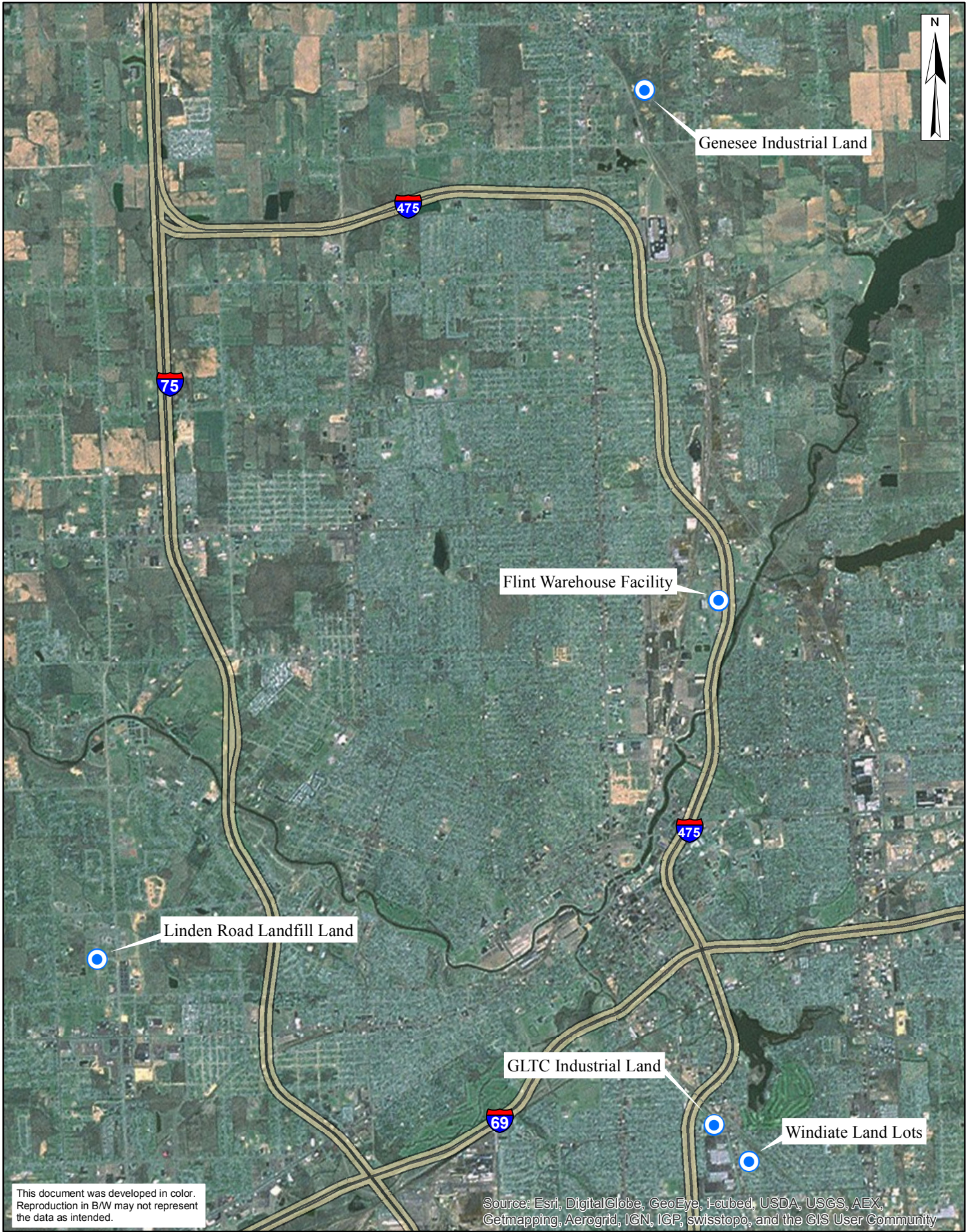
A former landfill that closed and recreational use allowed per MDEQ approved restrictive covenant. Currently limited O&M including cover inspection and repair, and mowing the grass is required. The property is leased to a soccer association who takes care of most of the maintenance.

Flint Warehouse Facility

No cleanup budget was established for this Site.

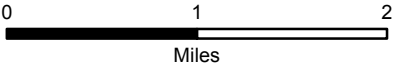
Genesee Industrial Land

No cleanup budget was established for this Site.



This document was developed in color.
Reproduction in B/W may not represent
the data as intended.

Source: Esri, DigitalGlobe, GeoEye, I-cubed, USDA, USGS, AEX,
Getmapping, Aerogrid, IGN, IGP, swisstopo, and the GIS User Community



SELECT FLINT SITES