



**Davison Road Industrial Land
Genesee County Public Information Meeting
June 25, 2013**

All remediation activities have been and will continue to be developed in consultation with and approved by the MDEQ. Initial Site remediation funding was approximately \$600,000 and approximately \$485,000 remains available.

2011 Site Activities

Prepared and obtained MDEQ approval of a site investigation work plan.

2012 Site Activities

Completed site investigation activities, including:

- 28 soil borings,
- 30 soil samples,
- 15 groundwater monitoring wells,
- 18 groundwater samples from new and existing wells,
- Aquifer tests and analyses,
- Property boundary and topographic surveys, and
- 3 Surface water samples.
- 2 rounds of quarterly groundwater and surface water sampling.

2013 Site Activities:

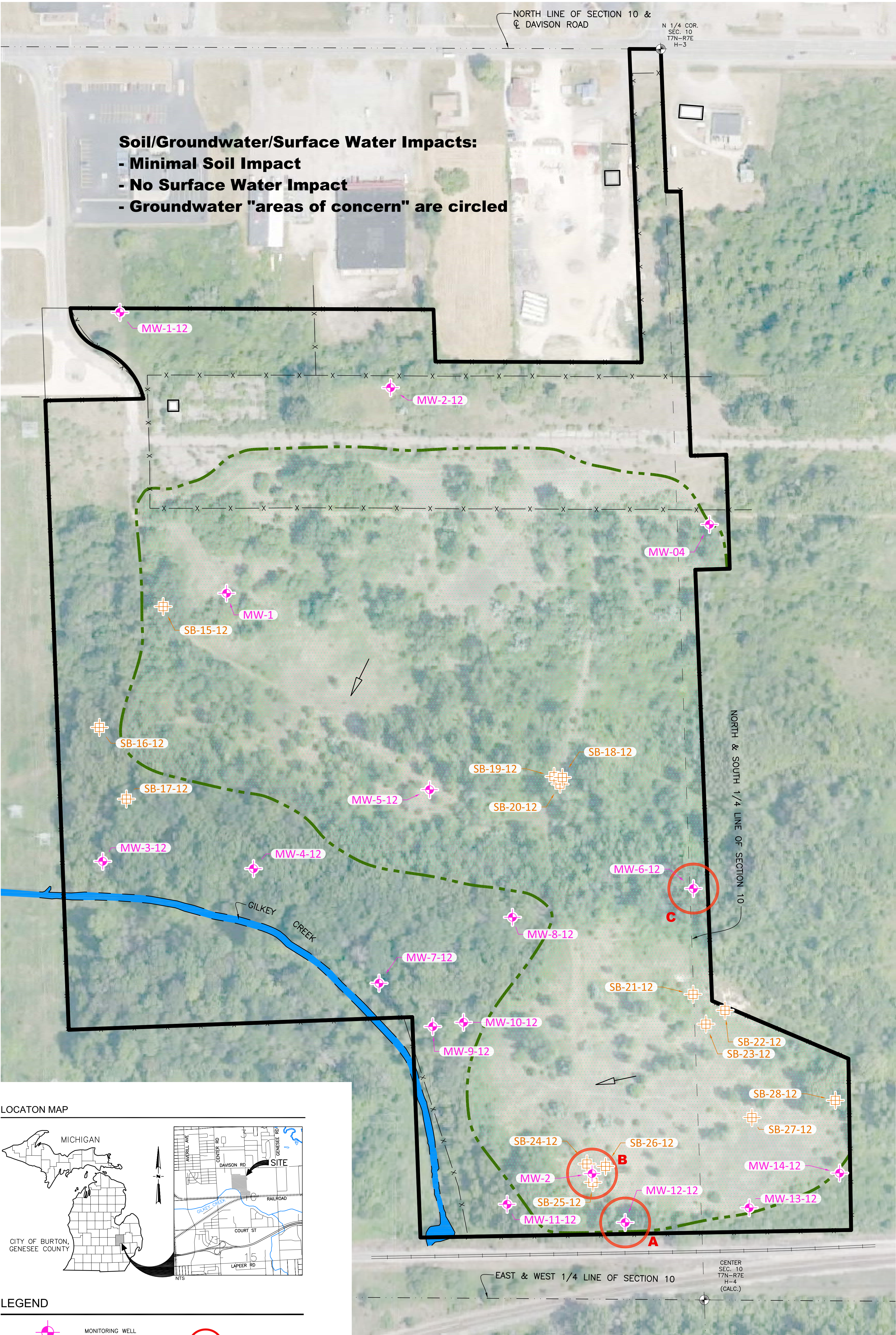
Continue implementation of site investigation activities In order to demonstrate plume stability and evaluate potential risks to sensitive receptors (surface water), including:

- Quarterly groundwater and surface water sampling
- Fence maintenance and repair
- Reporting

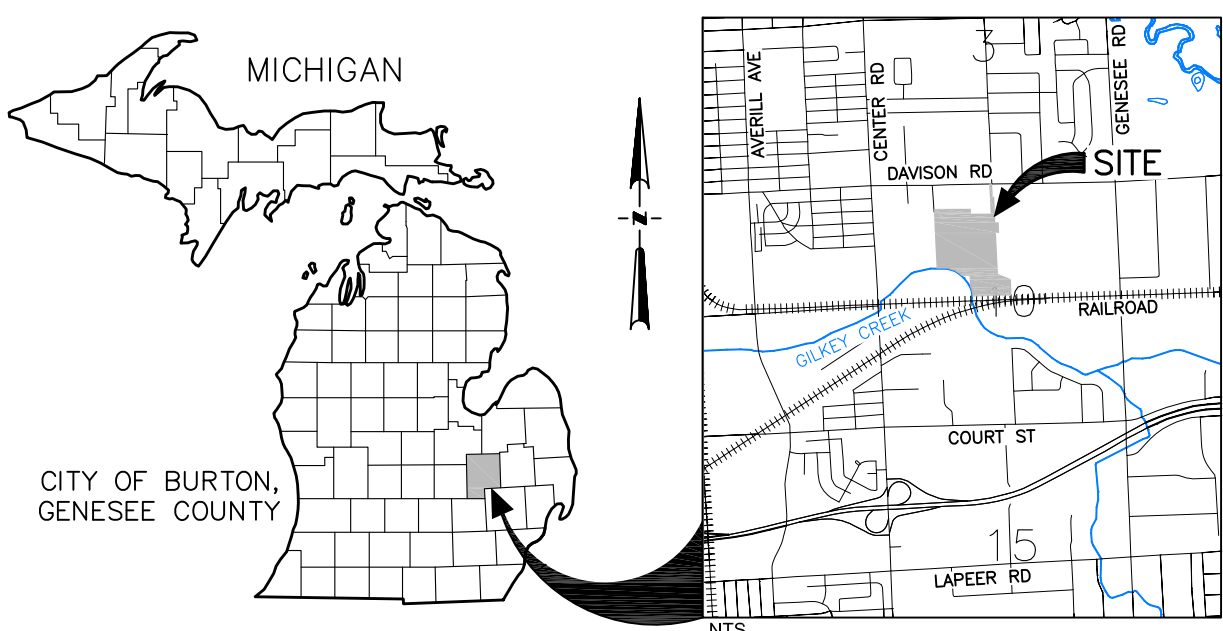
Summary of Data Collected

- Soils encountered during drilling consisted of native silt and clay, with some sand layers. Fill material, including foundry sand, slag, and other debris was encountered in the upper 4 feet in borings within the landfill area.
- Soil sample analytical data indicates several metal concentrations over Drinking Water Protection and Direct Contact criteria. Elevated levels of VOCs and SVOCs above Groundwater Surface Water Interface criteria also identified in southeast portion of site.
- Groundwater encountered at approximately 5 to 10 feet below grade across investigated area. Generally non-consistent, localized flow direction, with gradients to south and southwest in vicinity of creeks.
- Groundwater sample analytical data indicates no VOCs or SVOCs detected. Arsenic, iron and manganese were detected above Drinking Water criteria at several locations. Arsenic was detected above Groundwater Surface Water Interface criteria at 4 locations near creeks.

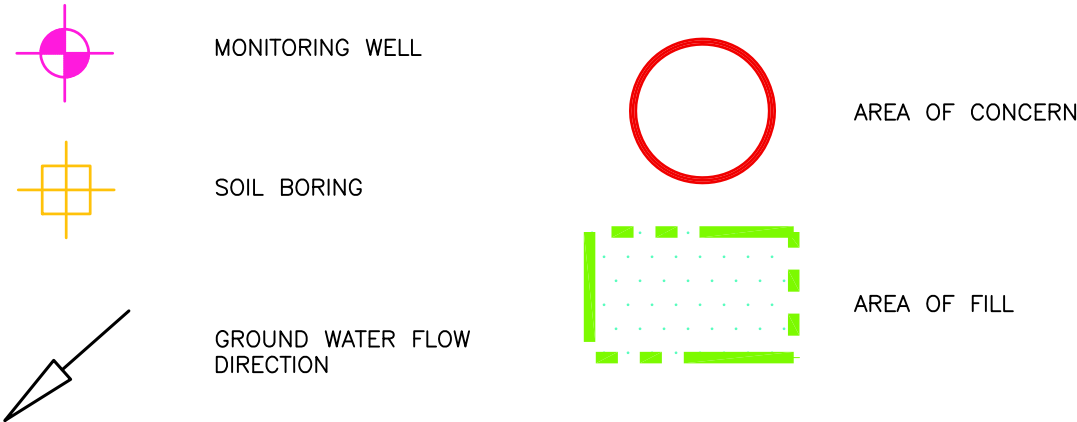
FILE:Project\12-068 Drawn: RACER\DWG\Survey\12-068_Aerial.dwg DATE: 7/17/2013 2:02 PM



LOCATON MAP



LEGEND



SITE MAP

RACER
DAVISON ROAD INDUSTRIAL LAND

PREPARED BY:



28003 Center Oaks Court • Suite 206 • Wixom, MI • 48393
Phone: 248-773-7986 • Fax: 248-924-3108

DRWG. by : MA
CHECK : AP
DATE : 6/24/2013
DWG: 12-068_Aerial
SHEET : 1 OF 1

CONT. INT.: N/A
FIELD : MD/SM/LB
V. SCALE : N/A
SCALE: 1"=150'
JOB# : 12-068

REVISIONS

DATE