



The RACER Trust:

Empowering America's Auto Communities

Elyria, OH

RACER Site 11110

Elyria Industrial Land
8315 Murray Ridge Rd.
Elyria, OH 44035

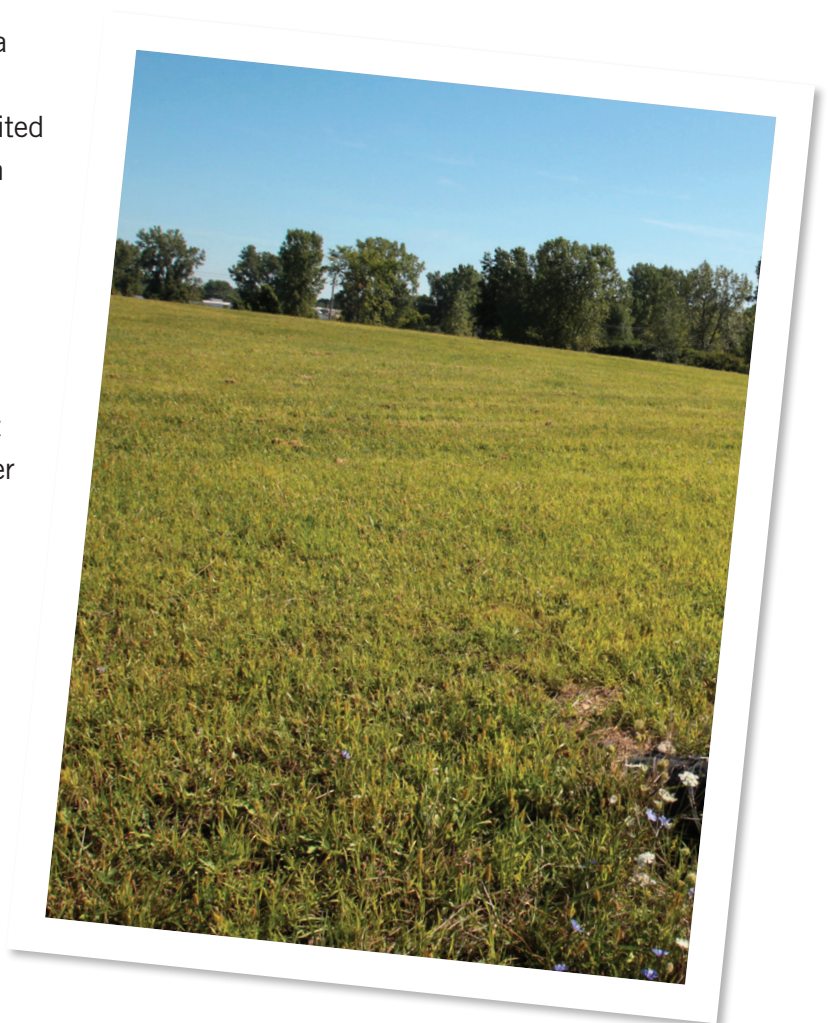
*U.S. Environmental Protection Agency
ID No: OHD 004 201 091*

Site Description

This 95.26-acre property is situated to the east of a manufacturing building, formerly owned by General Motors (GM) and now owned by Northern Ohio Limited Partnership. There are no buildings or structures on the property.

For approximately 35 years, GM manufactured products including wheel covers, bumper guards, auto grills, hood hinges, die cast parts, foam instrument panels, and jet engine turbine blades at the neighboring manufacturing building. Wastewater generated during manufacturing was treated at an on-site water treatment plant. The resultant sludges were disposed in three former surface impoundments located on this property.

Cleanup activities are performed by the RACER Trust, with the approval and oversight of the Ohio Environmental Protection Agency (Ohio EPA). The Settlement Agreement that established the RACER Trust set aside \$7.3 million for any future cleanup work and long-term maintenance of the site.



Continued



Environmental History

in 1987, GM received approval from the Ohio EPA for its closure plans for the three surface impoundments located on the property. On-site sludges were solidified with cement kiln dust and placed into a 5-acre landfill that was constructed over the site's former surface impoundments. This landfill is now closed in accordance with the plans and specifications approved by the Ohio EPA.

Next Steps

The RACER Trust is seeking to get a determination from Ohio EPA that no further clean-up work is required at the site. In order for Ohio EPA to make such a determination, a site-wide investigation and risk assessment is being performed, including a Resource Conservation and Recovery Act (RCRA) Corrective Action Investigation. The budget allocated by the Settlement Agreement for the site will fund this investigation, address any future remedial work needed at the former impoundments, if necessary, and provide for long-term maintenance of the existing 5-acre landfill.



Information on the site and past environmental tests can be viewed at the RACER website at www.racertrust.org.

For More Information

RACER: Pam Barnett • 855-RACER-411 • pbarnett@racertrust.org