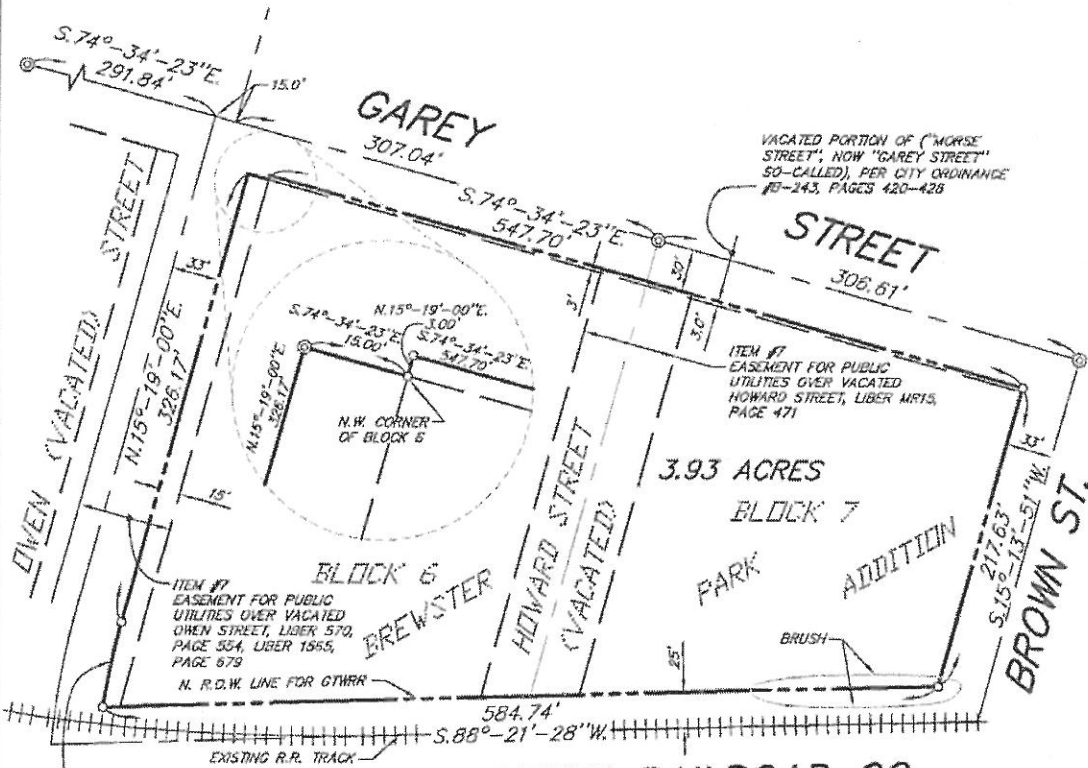


SCALE: 1" = 100'

⊙ - FOUND SURVEY CORNER

○ - SET 1/2" IRON ROD WITH CAP #54049

DWG. NO.: A-26925-1



GRAND TRUNK WESTERN RAILROAD CO.

L=60.26'
R=488.67'
CHD=60.22'
CHD BRG=N.11°-47'-04"E.



SURVEY FOR: Conestoga Rovers & Associates
651 Colby Drive
Waterloo, Ontario, Canada

DATE: September 10, 2012
SURVEY OF:

SEE SHEET A-26925-2 FOR DESCRIPTION



I hereby certify that I have surveyed the parcel of land hereon shown and described.

By: Eric S. Barden Date: 9/10/12
Eric S. Barden
Professional Surveyor No. 54049