



RACER Trust Buick City

Project Update

Thursday, March 14, 2019
Metropolitan Baptist Tabernacle
930 E. Myrtle Avenue (at Industrial)
6 pm to 8 pm

racertrust.org



Information and Materials

racertrust.org/buickcity18



About RACER Trust

- We own former General Motors Corp. (GM) properties – result of bankruptcy (June 2009)
- RACER was established by U.S. Bankruptcy Court March 2011
 - 89 former GM locations, 14 states
 - 44 million square feet of industrial space
 - 66 buildings
 - 7,000 acres
- In Michigan we have 36 sites with funded environmental cleanup budgets
- Buick City began with \$33 million – we have \$21 million remaining and long term budget to the year 2060



RACER Trust's Mission

- **Help communities affected by the closure of GM facilities**
- **Conduct safe, effective, efficient environmental cleanups**
- **Help create new jobs**
- **Help bring new investment and local tax revenue**
- **Position properties for economic redevelopment and job creation through the sale to qualified, responsible buyers**



Overview

- **We have been working on this site since April of 2011**
- **We held a public information meetings in June 2013 and November 2018**
- **Completed substantial work on site**
- **Tonight we want to share a summary of what we have been doing**
- **And what we plan to do over the months ahead**
- **Our work has been complicated by the recent discovery of PFAS**

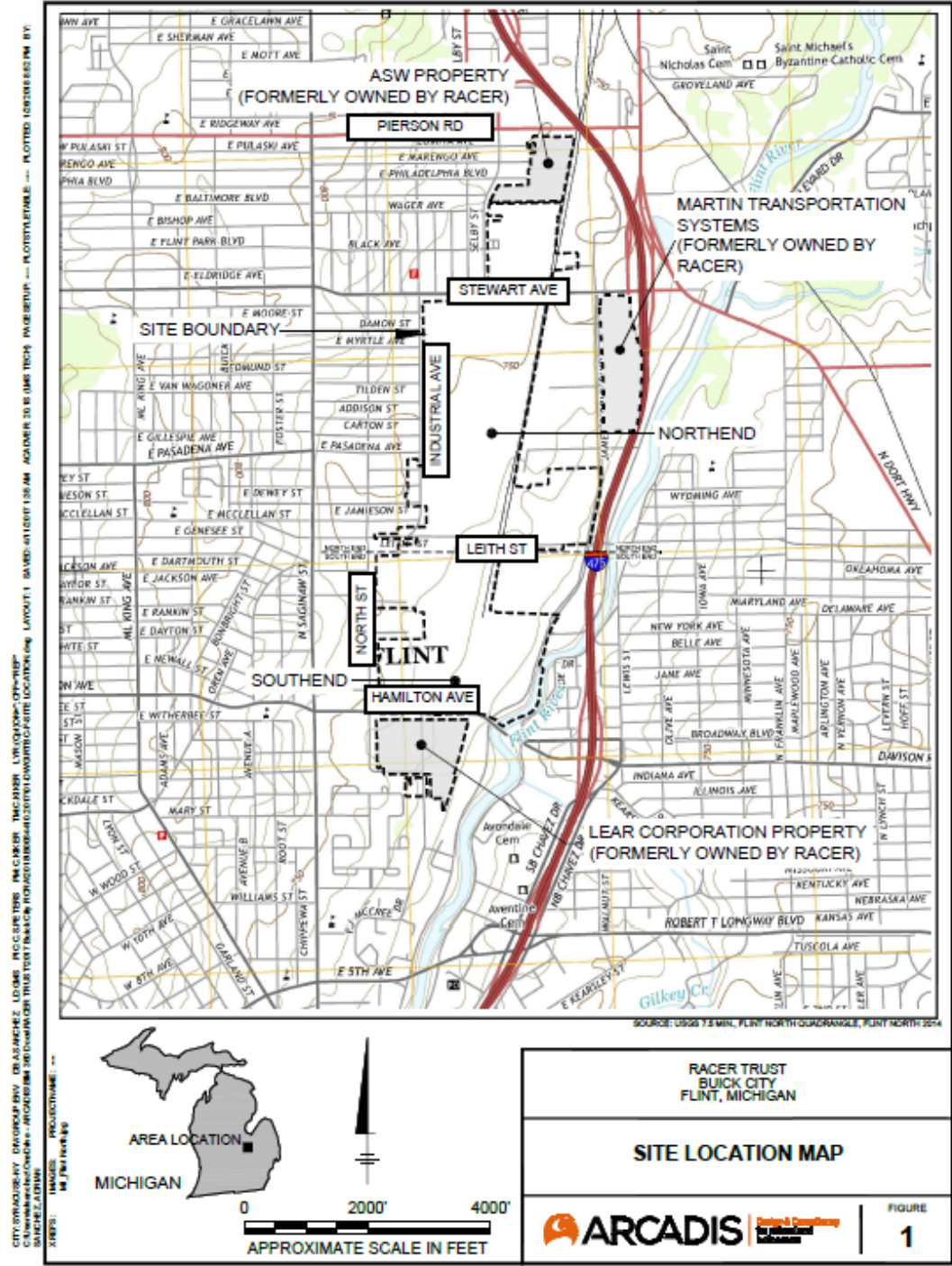


Format for Tonight

- **Grant Trigger, Michigan Cleanup Manager**
Review basic work done and current activities
- **Patricia Spitzley, Deputy Redevelopment Manager**
Overview of marketing and development activities
- **Others here to help answer questions**
- **Small Group Discussions**
Are there questions that may need more information
Better way to listen and answer questions
If we cannot answer a question tonight - we will do our best to get an answer
- **Reconvene – sum up discussion**
- **Next meeting – late summer early fall**

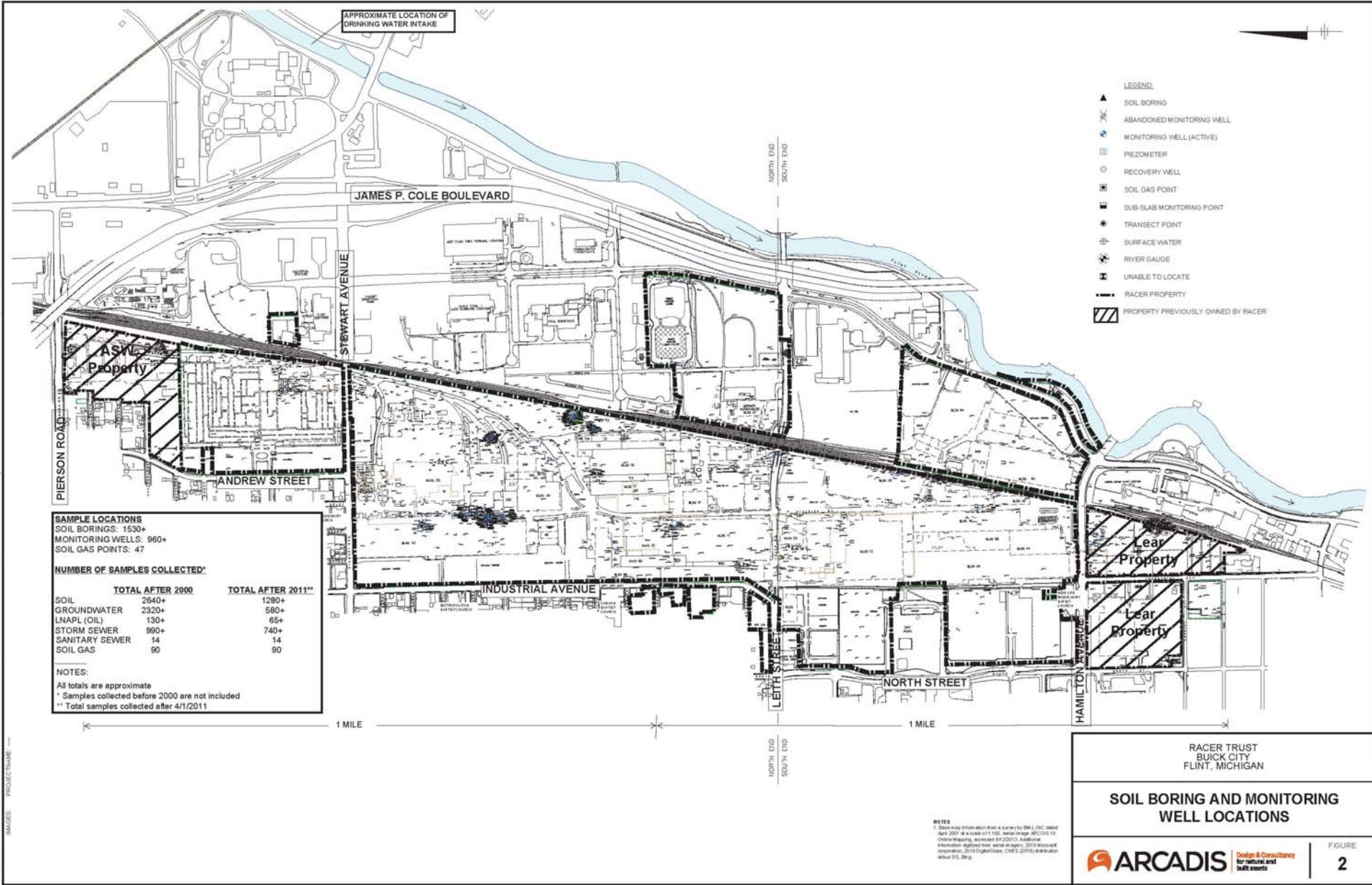


Trust Buick City

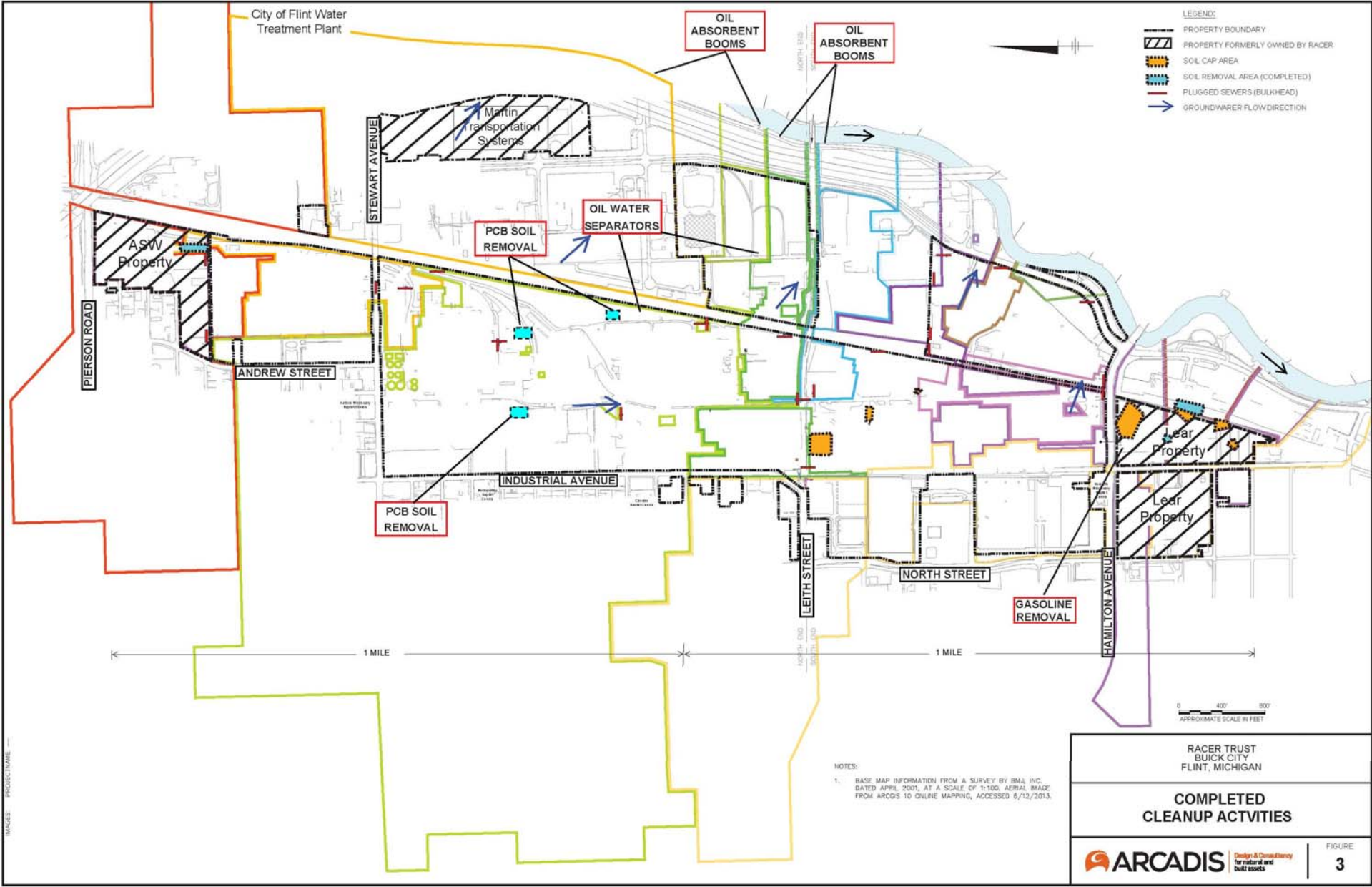


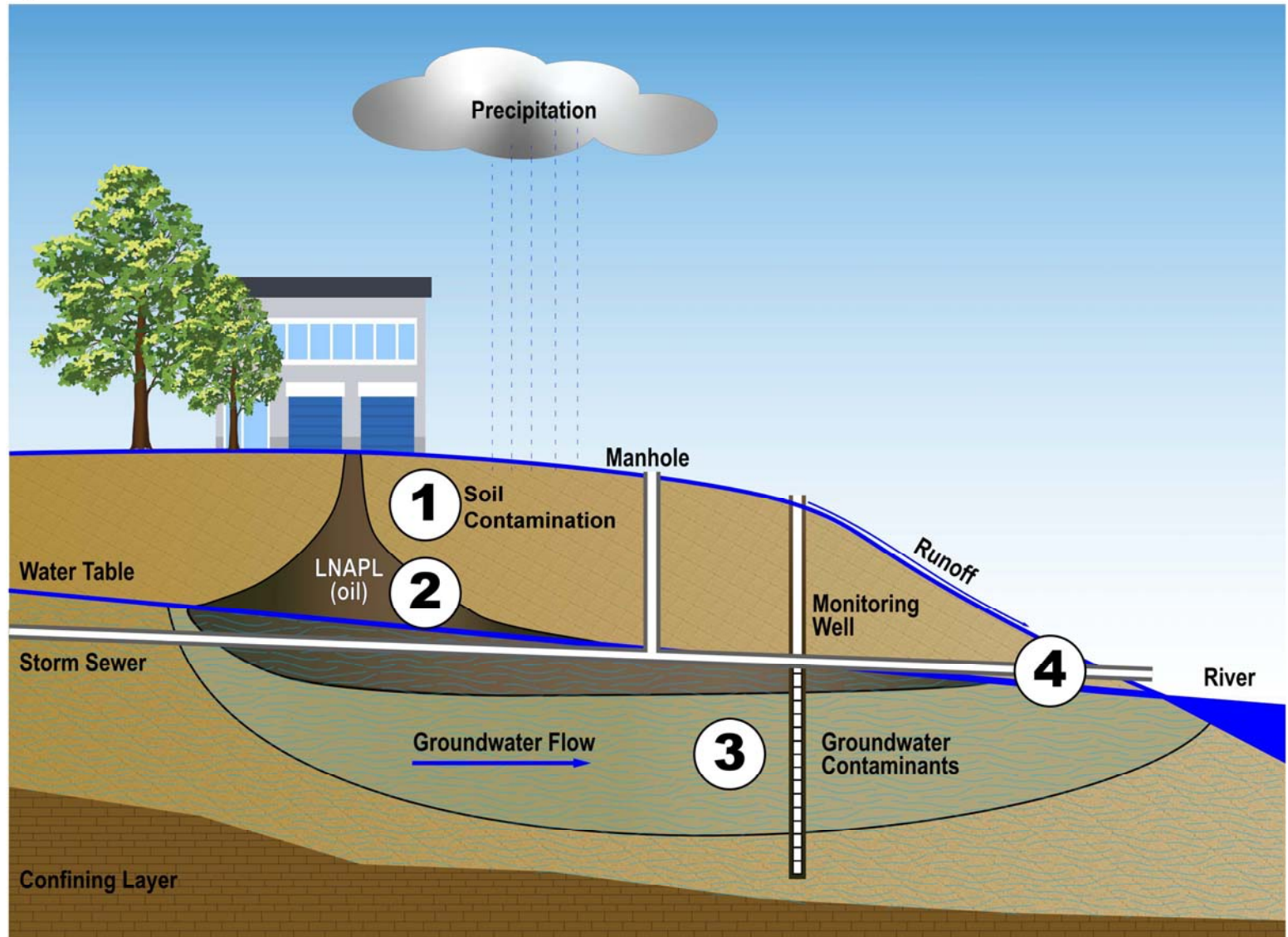
CITY ENGINEER: DIVISION OF PUBLIC WORKS, 1000 W. WOOD ST., FLINT, MI 48906-1300
 COUNTY ENGINEER: DIVISION OF PUBLIC WORKS, 1000 W. WOOD ST., FLINT, MI 48906-1300
 DATE: 08/11/2010
 DRAWN BY: [Name]
 CHECKED BY: [Name]
 PROJECT: [Name]
 SHEET: [Name]

RACER Trust Buick City

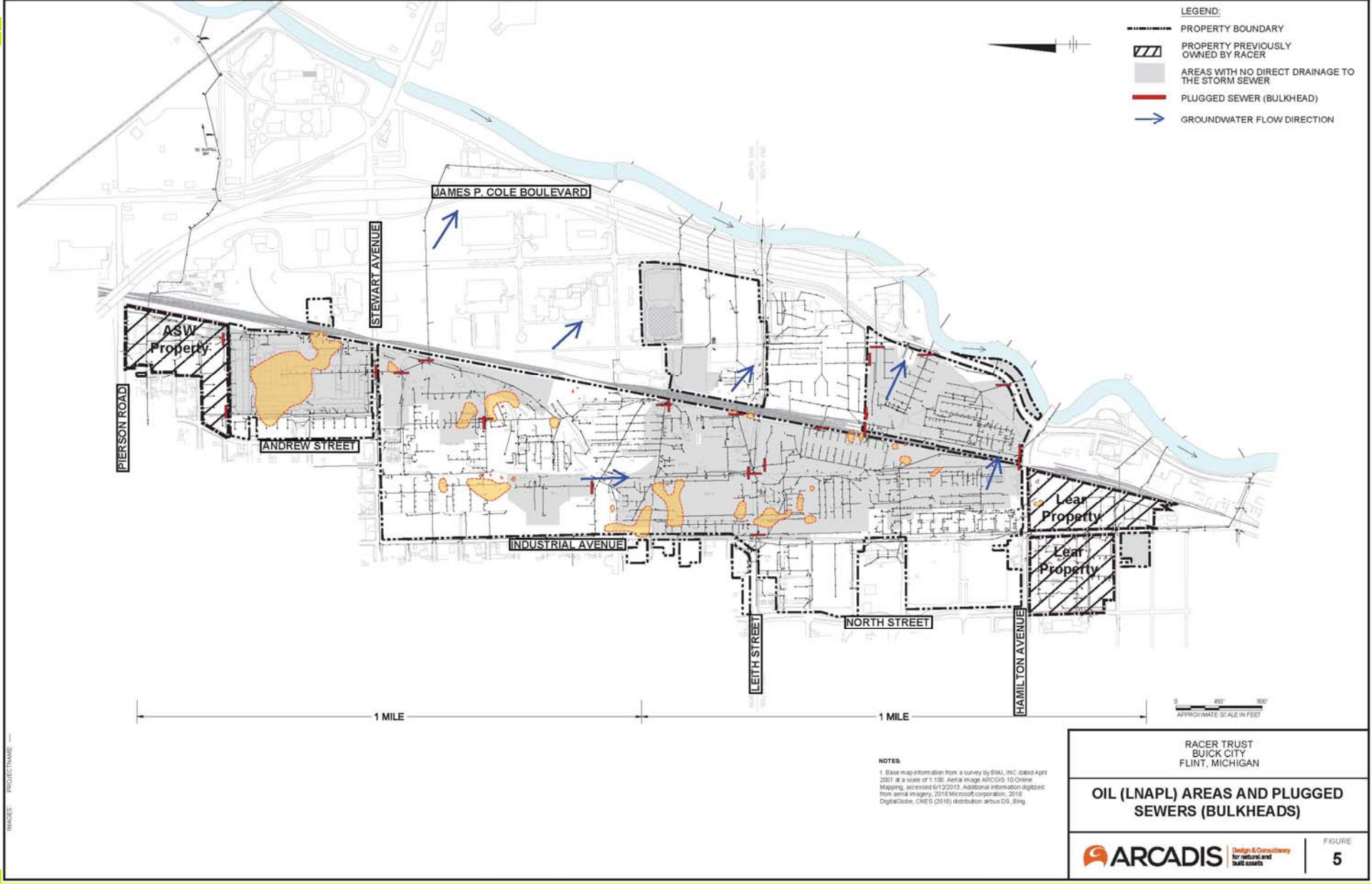


RACER Trust Buick City





RACER Trust Buick City



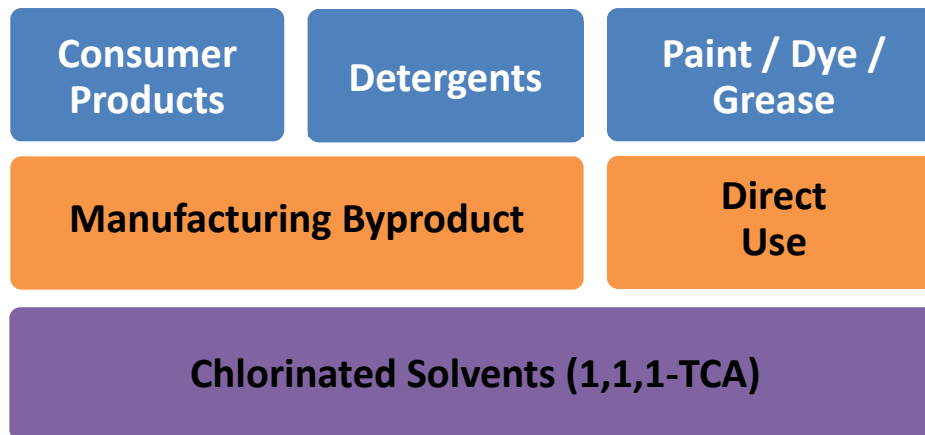


What is 1,4-dioxane?

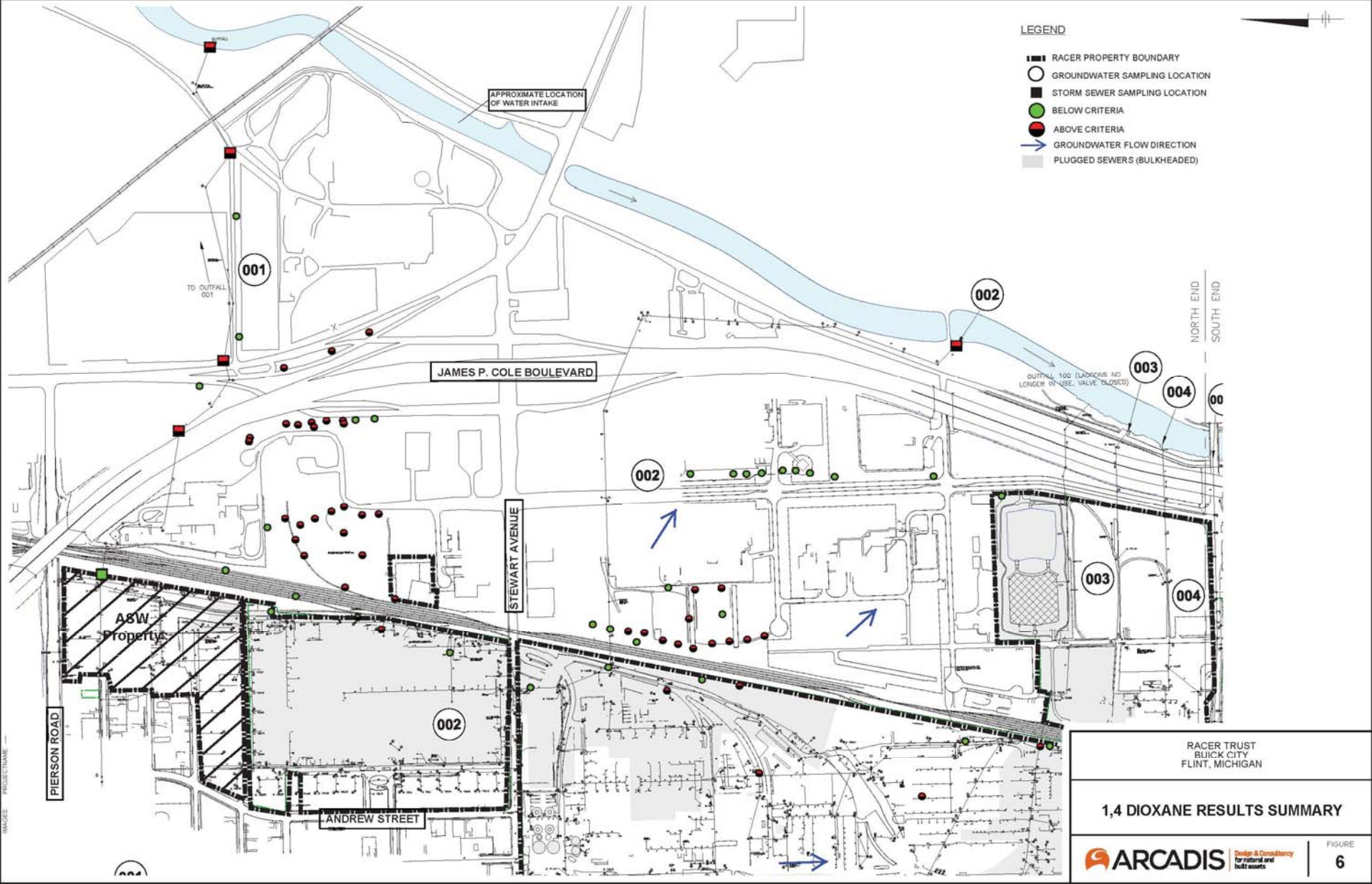
1,4-Dioxane is an industrial solvent. It is typically used as a stabilizer in other solvents and is commonly found in many household products:

- Highly soluble in water
- Very mobile, flows with groundwater
- Creates long plumes
- Potential adverse health effects, suspected carcinogen

Sources of 1,4-dioxane



RACER Trust Buick City





What Are PFAS (Per- and Polyfluoroalkyl Substances)?

PFAS are a part of a group of chemicals used globally during the past 50 years in manufacturing, firefighting and thousands of common household and other consumer products (USEPA):

- Made up of “chains” of carbon atoms attached to fluorine and other atoms
- Stable, persistent and mobile in the environment – the “Forever Chemicals”
- Found everywhere in the US and around the world
- Bioaccumulative
- Potential adverse health effects, suspected carcinogen
- Top priority - prevent drinking water exposures and minimize eating fish



Firefighting Foams

Metal Plating

Textiles

Electronics

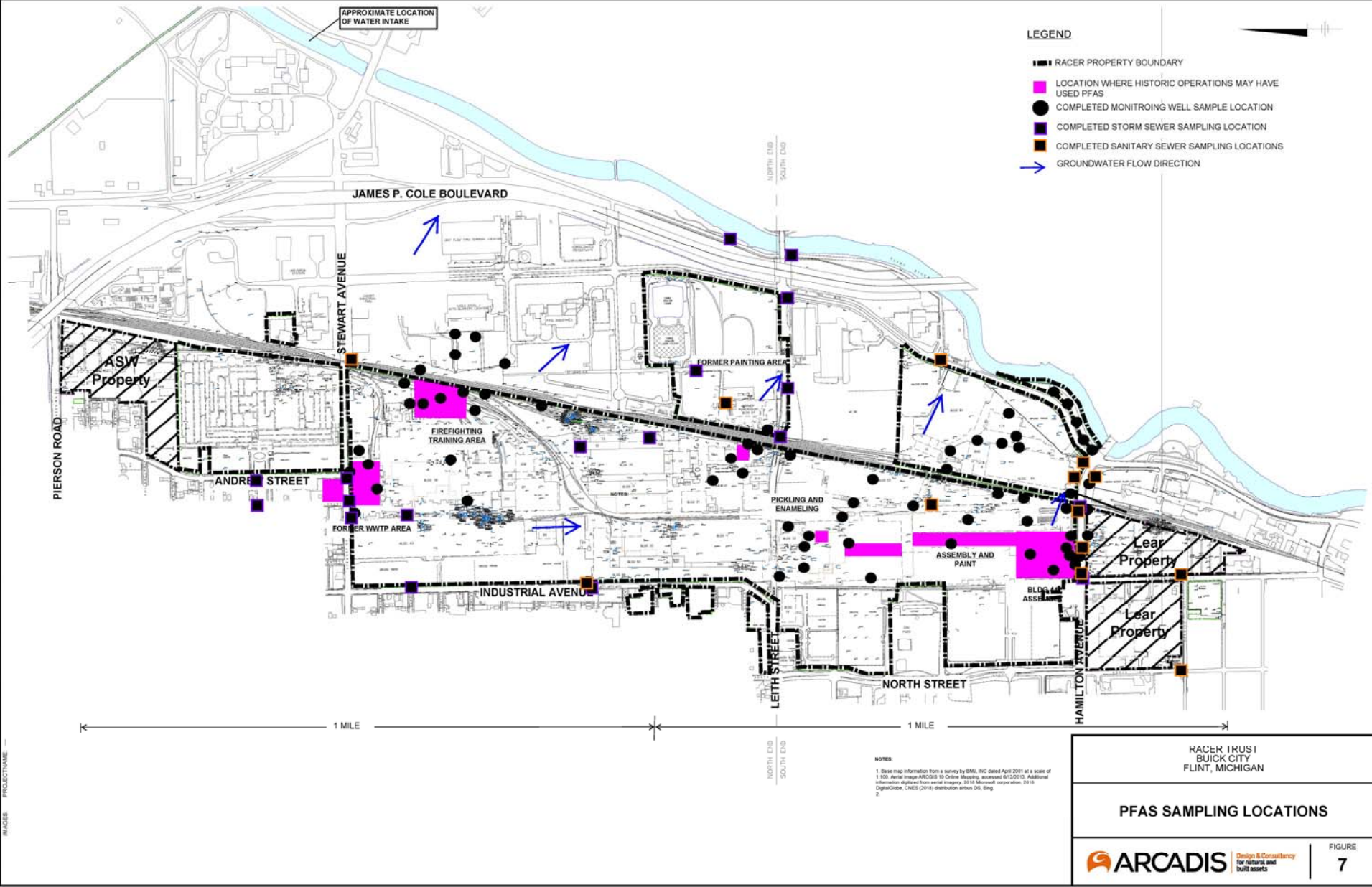
Photography

Paper Coatings

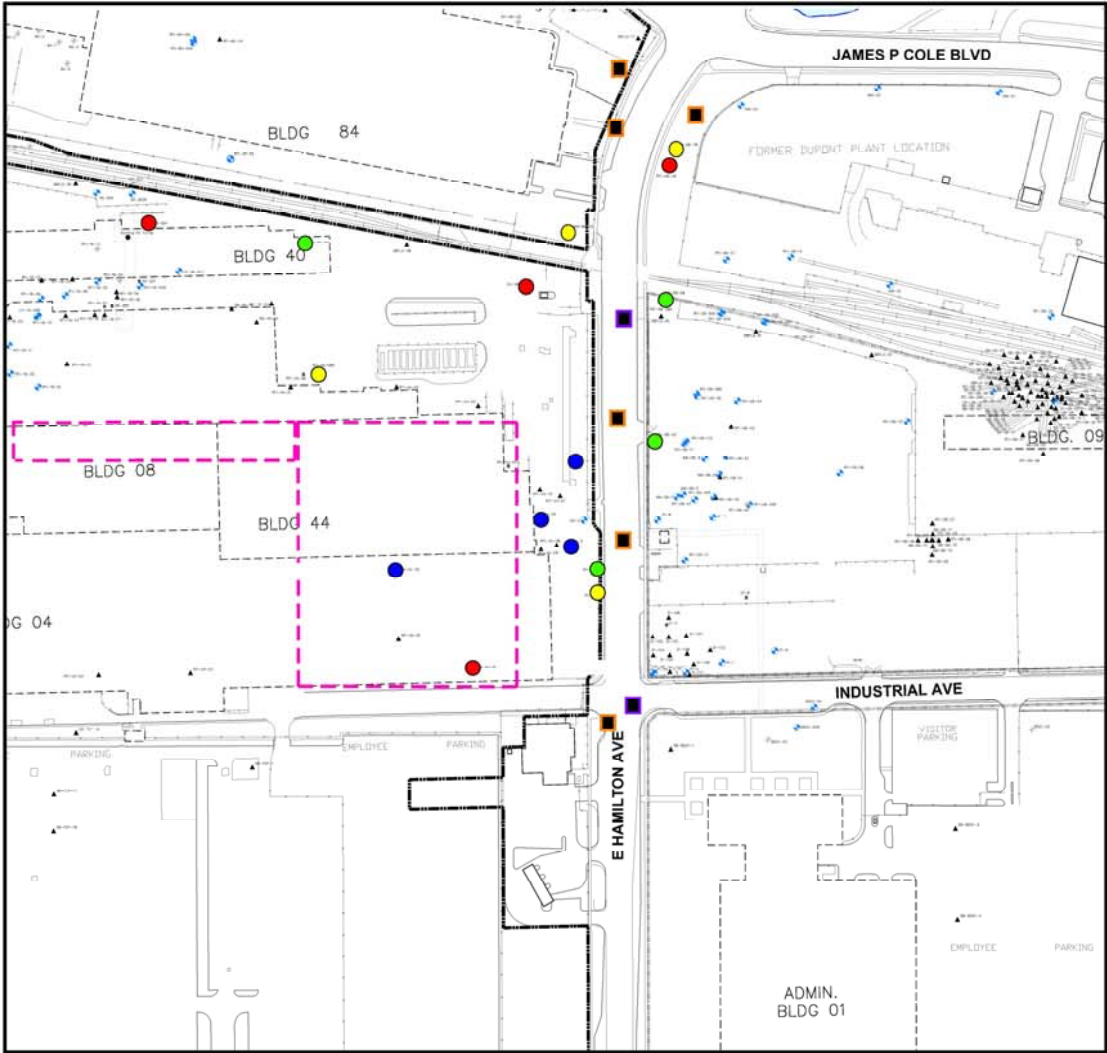
Paints

Hydraulic Fluids

RACER Trust Buick City



RACER Trust Buick City



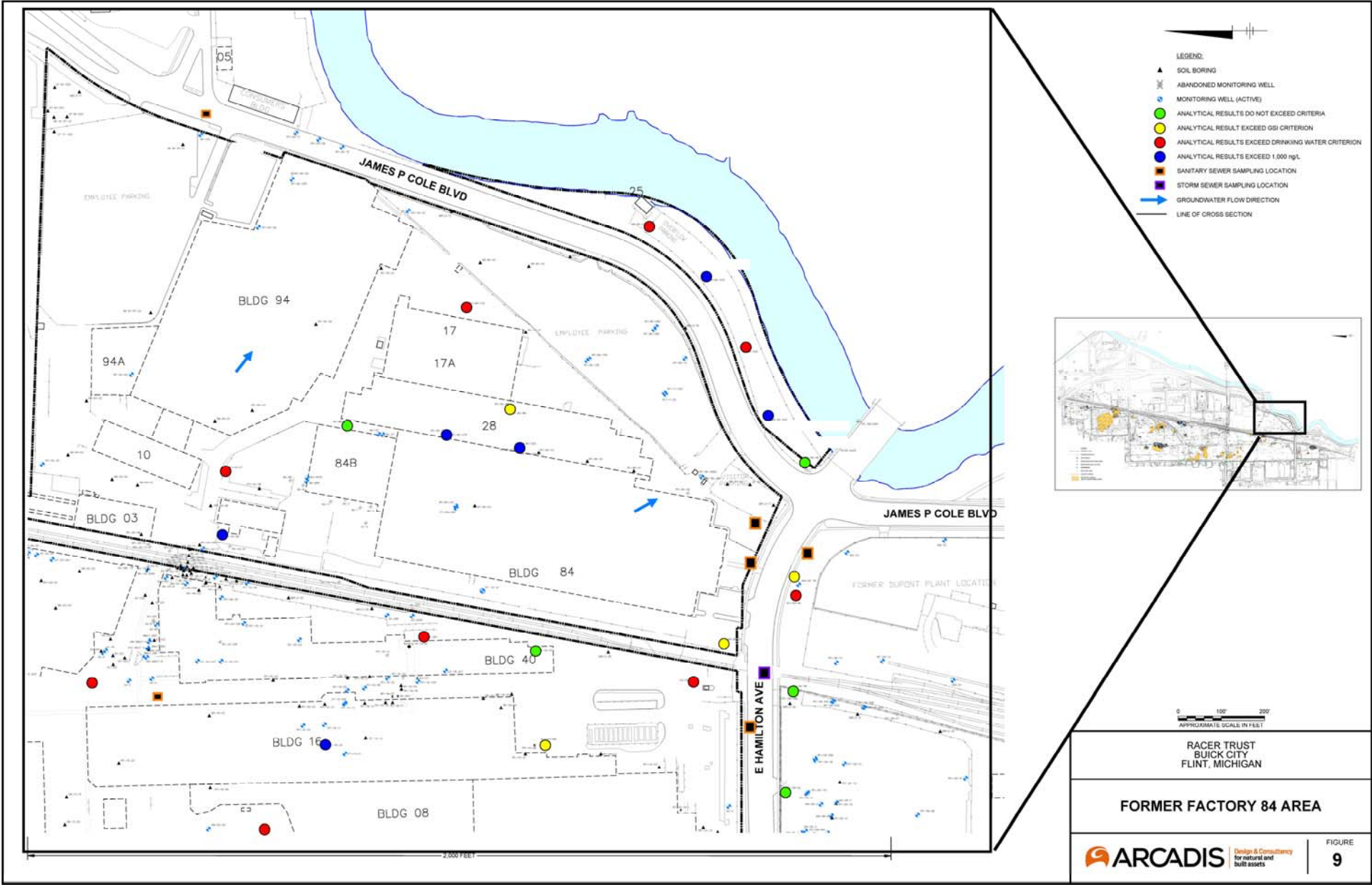
- LEGEND:**
- ▲ SOIL BORING
 - ⊗ ABANDONED MONITORING WELL
 - MONITORING WELL (ACTIVE)
 - ANALYTICAL RESULTS DO NOT EXCEED CRITERIA
 - ANALYTICAL RESULTS EXCEED OSI CRITERION
 - ANALYTICAL RESULTS EXCEED DRINKING WATER CRITERION
 - ANALYTICAL RESULTS EXCEED 1,000 µg/L
 - SANITARY SEWER SAMPLING LOCATION
 - STORM SEWER SAMPLING LOCATION



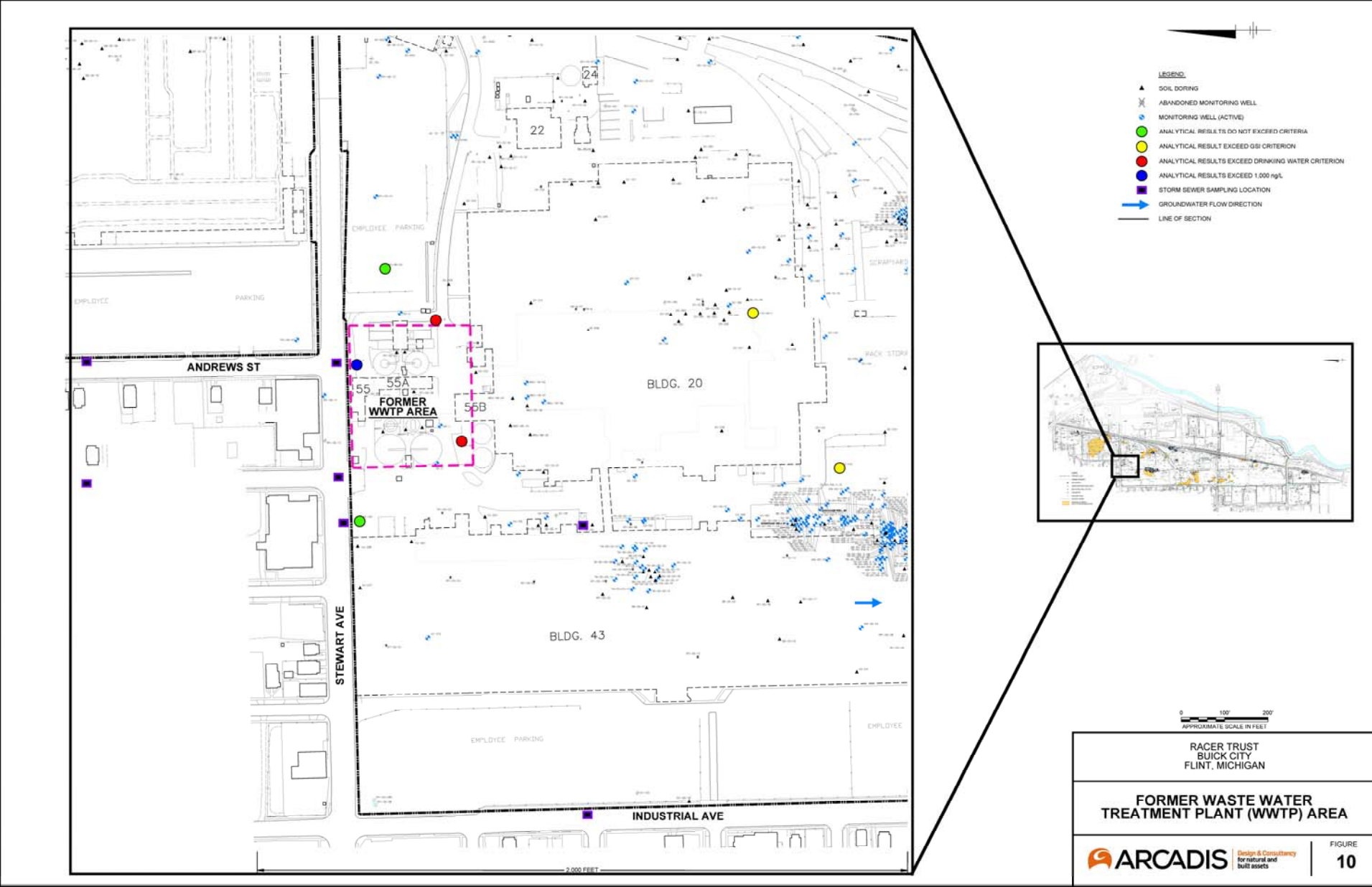
0 100 200
APPROXIMATE SCALE IN FEET

RACER TRUST BUICK CITY FLINT, MICHIGAN	
BUILDING 44 ASSEMBLY PAINT SHOP	
ARCADIS <small>Design & Consultancy for natural and built assets</small>	FIGURE 8

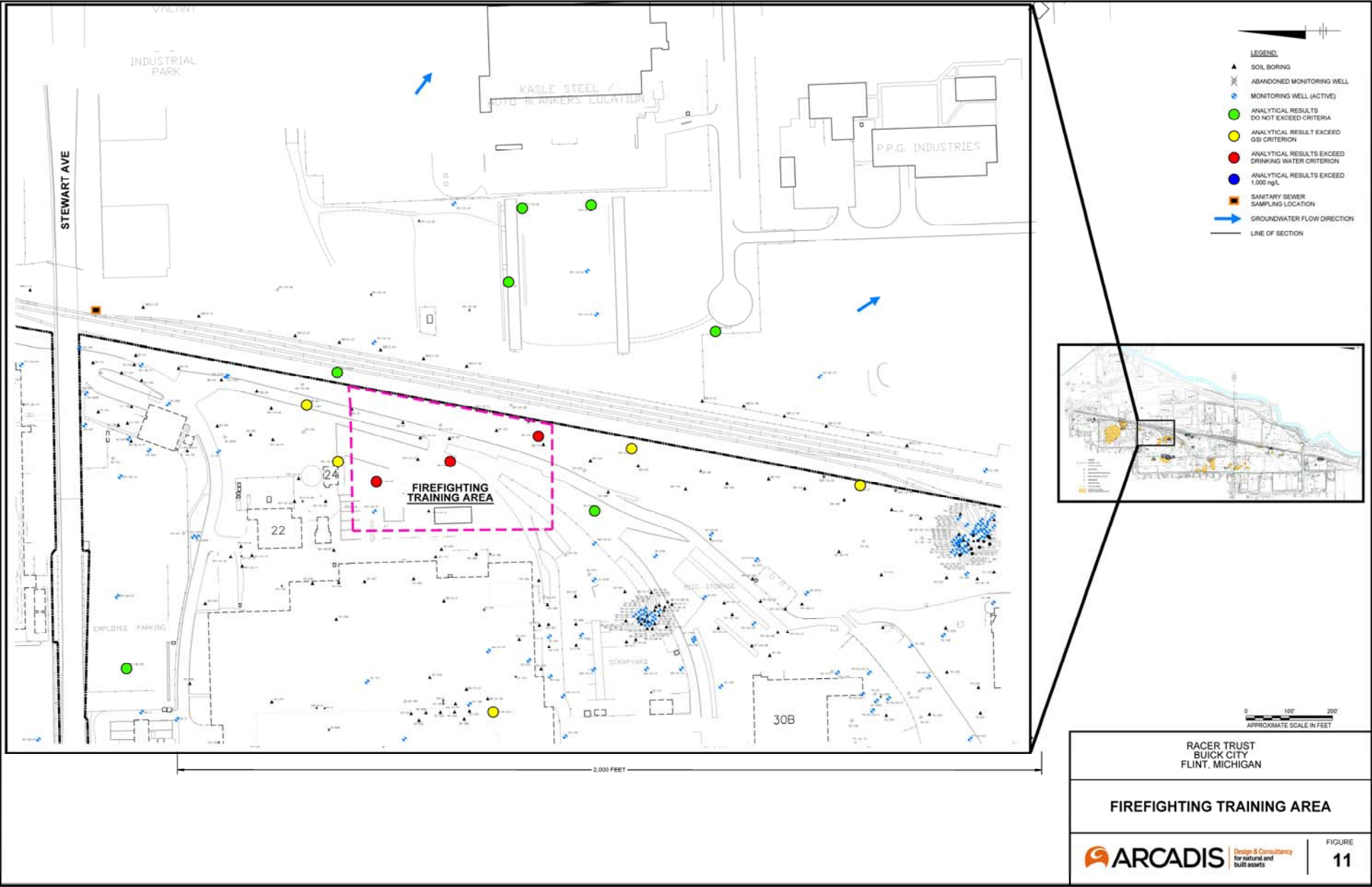
RACER Trust Buick City



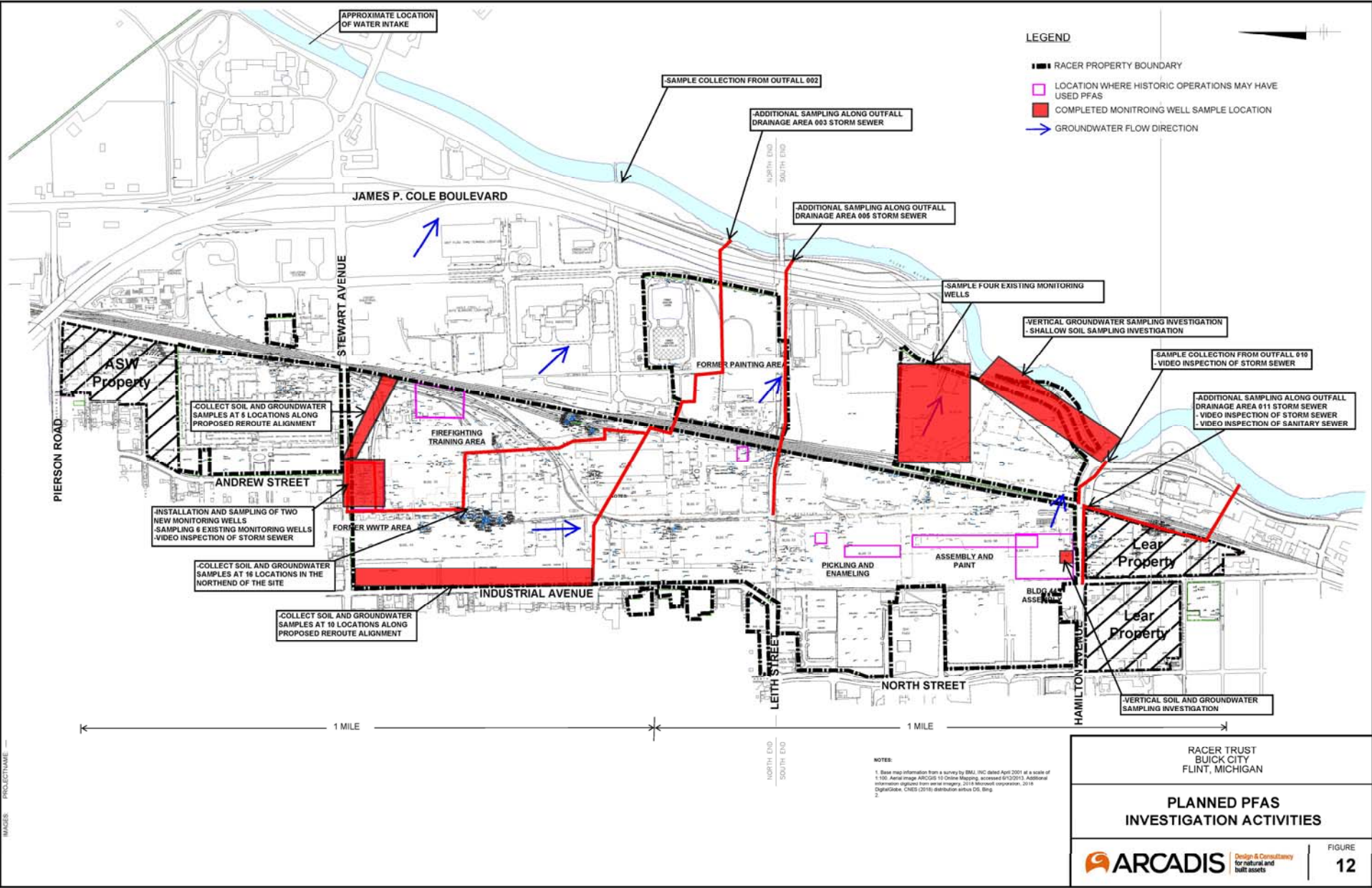
RACER Trust Buick City



RACER Trust Buick City



RACER Trust Buick City





Thank you.
Questions?