



## Property Highlights

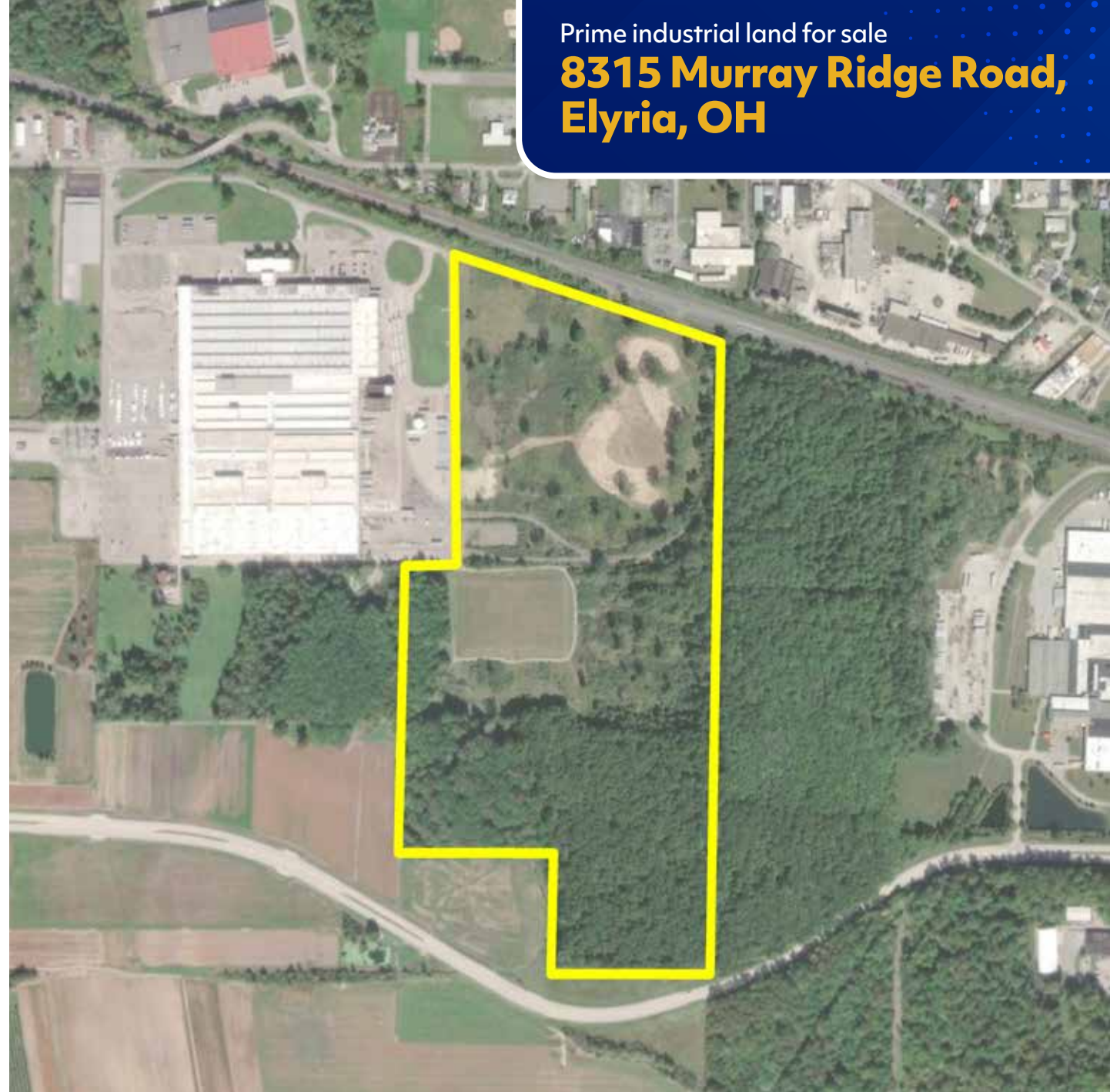
- 95 acres
- Active onsite rail spurs
- Zoned heavy industrial
- Public water and sewer

### CONTACT:



**Bruce Rasher**  
Redevelopment Manager  
[brasher@racertrust.org](mailto:brasher@racertrust.org)

Prime industrial land for sale  
**8315 Murray Ridge Road,  
Elyria, OH**



**October 2025**

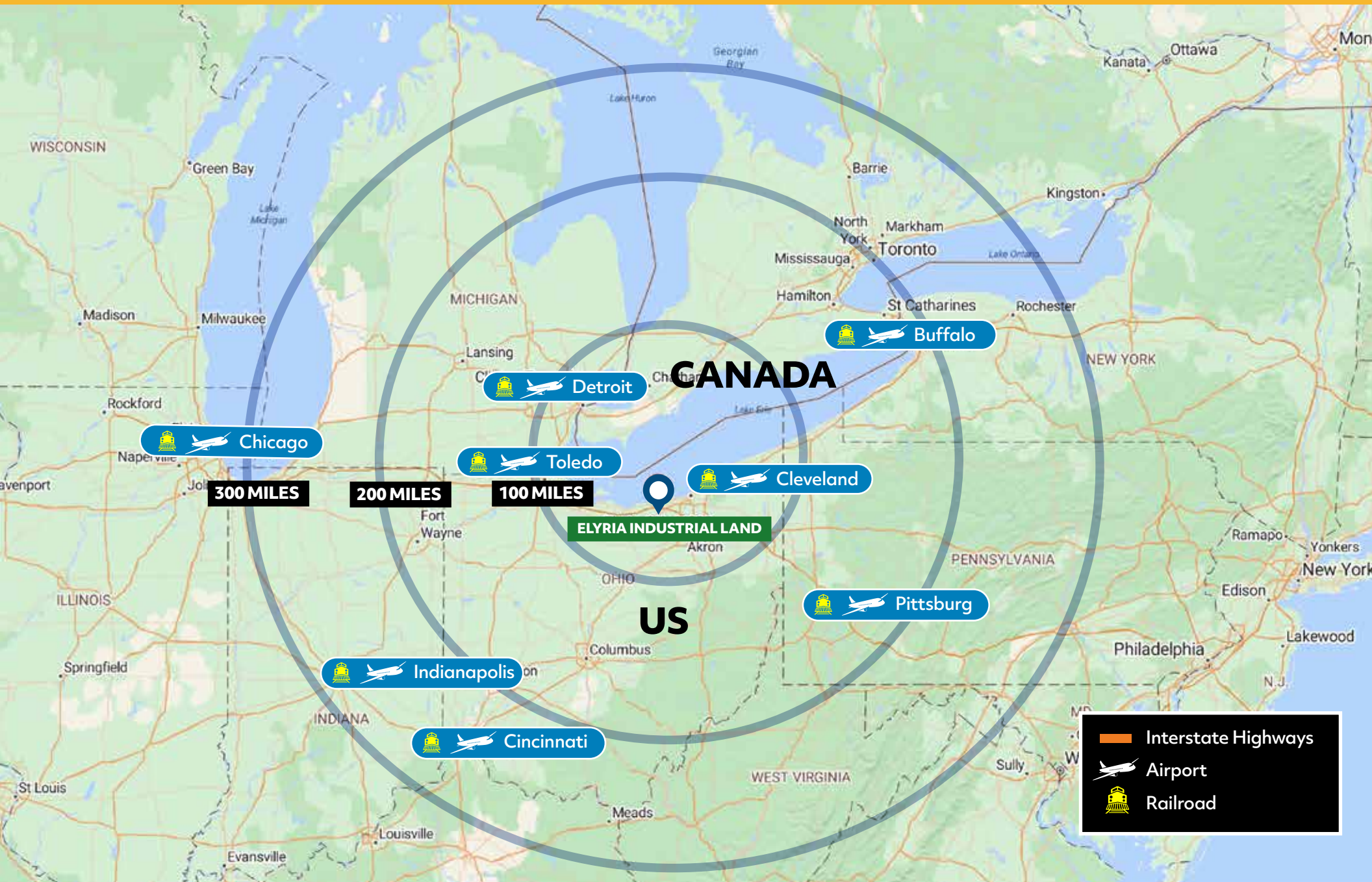
**RACER SITE ID: 11110**

Prime industrial land for sale  
**8315 Murray Ridge Road, Elyria, OH**



# Prime industrial land for sale

## 8315 Murray Ridge Road, Elyria, OH



# Prime industrial land for sale

## 8315 Murray Ridge Road, Elyria, OH



## SUMMARY

### Elyria Industrial Land

RACER Site ID:	11110
Address:	8315 Murray Ridge Road, Elyria, OH
Road frontage:	Access to the Property is via a perpetual, transferable recorded easement.
Rail:	Norfolk Southern, 1,408 feet of frontage.
Acreage:	95
Zoning:	Heavy Industrial
Tax parcel numbers:	06-24-012-102-004
Annual property taxes:	\$9,488 (2025)

### Utilities

Water:	20" and 30" municipal waterlines within Property's northern boundary.
Sanitary:	Multiple municipal sanitary sewer lines accessible to the Property.
Electric:	7.2/12.5 kV distribution circuit along Property's western boundary; 138 kV transmission corridor along Property's southern boundary.
Natural gas:	14", 115 PSI service line along Property's western boundary; regulating station nearby.

### For Your Due Diligence:

- Land survey: [Click Here](#)
- Environmental Fact Sheet: [Click Here](#)
- Environmental Technical Reports: [Click Here](#)



## ABOUT RACER TRUST

The Revitalizing Auto Communities Environmental Response (RACER) Trust was created in March 2011 by the U.S. Bankruptcy Court to clean up and position for redevelopment the properties abandoned by General Motors Corp. in its 2009 bankruptcy. When it was formed, RACER was one of the largest holders of industrial properties in the United States, and the largest environmental response trust in U.S. history. Investments by RACER Trust's buyers and end users have generated annual, recurring impacts of more than 69,000 permanent FTE jobs, \$5.7 billion in labor income and \$24 billion in regional economic output.



**RACER Trust**  
660 Woodward Ave., Suite 1521  
P.O. Box 43859  
Detroit, MI 48226



(855) RACER-411



[www.racertrust.org](http://www.racertrust.org)

**Buyer's Guide:** <https://www.racertrust.org/buyers-guide>

**Full property list:** <https://www.racertrust.org/properties/all>

More information about the Elyria Industrial Land Property is available at <https://www.racertrust.org/properties/elyria-industrial-land>

*Disclaimer: RACER makes no representations as to the accuracy of third-party information contained herein.*

