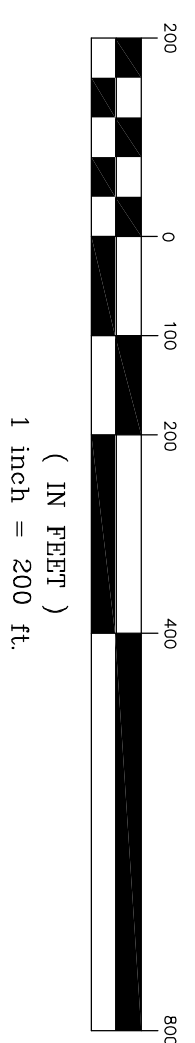


Scale: 1" = 200'
GRAPHIC SCALE



PARCEL DESCRIPTIONS

LANDFILL PARCEL DESCRIPTION

Situated in the Township of Genesee, Genesee County, Michigan, described as:

Being all that part of real property situated in Section 18, T.8N., R.7E., Genesee Township, Genesee County, State of Michigan and described as follows: Commencing at the South 1/4 corner of said Section 18; thence South 88 degrees 30 minutes 19 seconds East 507.20 feet on the South line of the Southeast 1/4 of said Section 18; thence North 00 degrees 29 minutes 38 seconds East 663.31 feet; thence South 82 degrees 29 minutes 52 seconds East 010.62 feet; 77 minutes 56 seconds East 123.91 feet; thence South 89 degrees 35 minutes 04 seconds East 47 46.82 feet to a point on a tangent curve concave to the Southeast having a radius of 702.99 feet; thence along said curve North 45 degrees 45 minutes 45 seconds East 45 seconds East 388.76 feet; thence North 32 degrees 25 minutes 12 seconds East 121.25 feet; 34 minutes North 28 degrees 30 minutes East 162.86 feet; thence North 20 degrees 34 minutes East 686.19 feet and a central angle of 11 degrees 49 minutes 15 seconds; thence North 150.04 feet on the arc of said curve, said arc having a chord bearing and distance of 45 seconds East 48.23 minutes the Southeast 05 degrees 51 minutes 22 seconds East 42.20 minutes South 26 degrees 45 minutes 51 seconds East 312.89 feet; thence South 20 degrees 25 minutes 09 seconds East 190.42 feet; thence South 08 degrees 54 minutes 02 seconds East 89 seconds East 34 minutes 30 seconds West 650.22 feet to a point of Beginning; thence along 24.15 acres, more or less, and subject to easements, restrictions, reservations, rights of way, leases and agreements of record, if any.

RMA PARCEL DESCRIPTION

Situated in the Township of Genesee, Genesee County, Michigan, described as:

Being all that part of real property situated in Section 18, T.8N., R.7E., Genesee Township, Genesee County, State of Michigan and described as follows: Commencing at the South 1/4 corner of said Section 18; thence South 88 degrees 30 minutes 19 seconds East 507.20 feet on the South line of the Southeast 1/4 of said Section 18; thence North 00 degrees 29 minutes 38 seconds East 663.31 feet; thence South 82 degrees 29 minutes 52 seconds East 010.62 feet; 77 minutes North 89 degrees 35 minutes 47 seconds West 30.00 feet; thence North 00 degrees 29 minutes 38 seconds East 409.70 feet; thence South 89 degrees 24 minutes 18 seconds East 38 minutes North 89 degrees 44 minutes 54 seconds West 445.94 feet; thence North 00 degrees 29 minutes 38 seconds East 185.27 feet; thence North 00 degrees 13 minutes 46 seconds East 52.95 feet; thence North 05 degrees 03 minutes 55 seconds East 63.91 feet; thence North 03 degrees 44 minutes 14 minutes 44 seconds East 145.44 seconds East 1.85 feet; thence South 77 degrees 32 minutes 18 seconds East 154.05 feet; thence South 10 degrees 07 minutes 00 seconds East 85.64 feet to a point on a front tangent curve concave to the Northwest having a radius of 13 minutes 43 seconds West 316.21 feet; thence South 32 degrees 27 minutes 56 seconds West 214.50 feet to a point on a tangent curve, concave to the southeast, having a radius of 633.14 feet; thence along said curve North 45 degrees 45 minutes 45 seconds East 45 seconds East 316.63 feet along the arc of said curve, said arc having a chord bearing and distance of South 20 degrees 13 minutes 43 seconds West 247.60 feet; thence North 89 degrees 17 minutes 33 seconds West 484.14 feet to the Point of Beginning, containing 101.00 acres more or less and subject to easements, restrictions, reservations, rights of way, leases and agreements of record, if any.

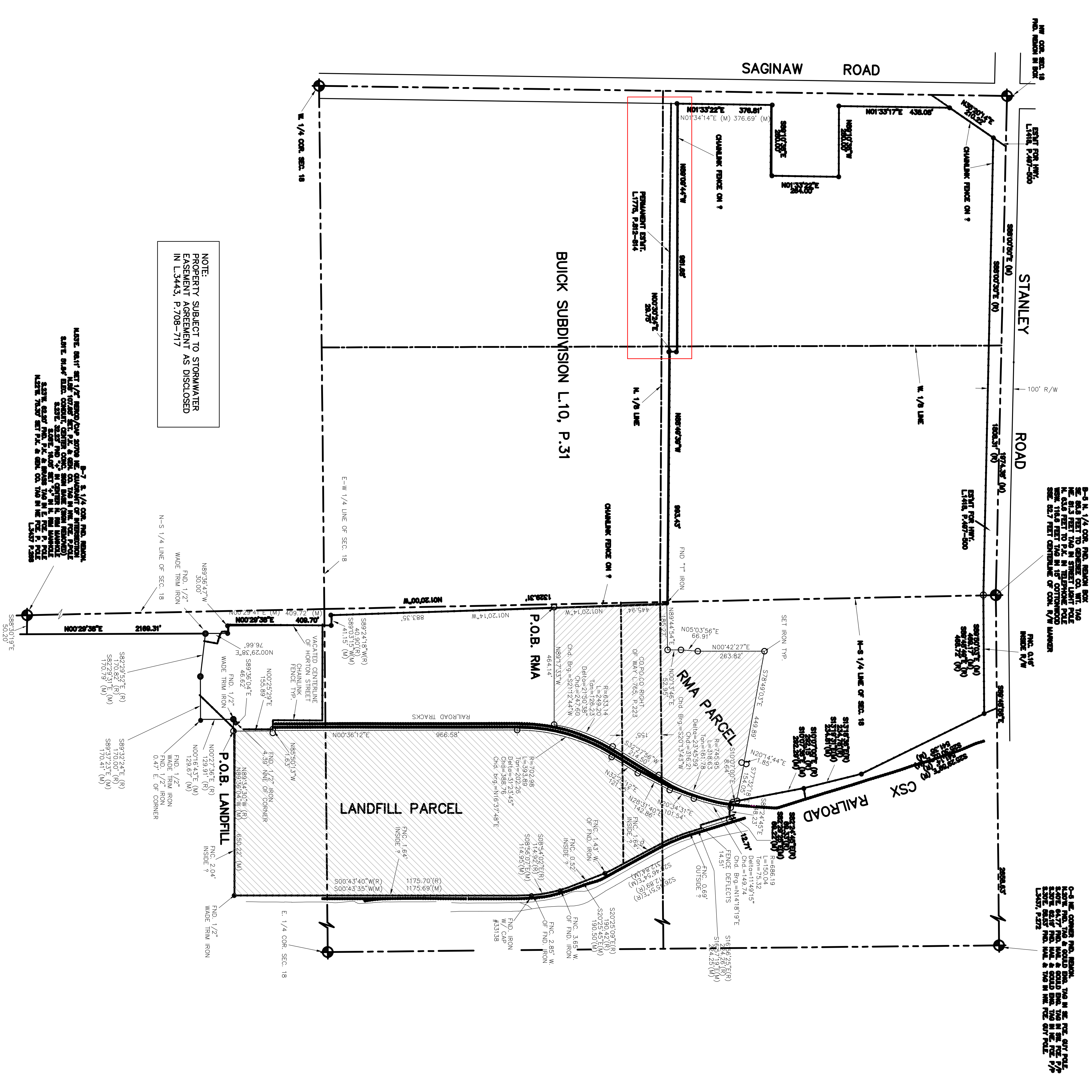
CERTIFICATE OF SURVEY
Being a part of the East 1/2 of Section 18, T.8N., R.7E. Genesee Township, Genesee County, Michigan
Certify to: **General Motors Corporation**

I hereby certify that I have located and mopped the land hereon plotted and/or described, on the date noted hereon, that I have complied with the requirements of Act 132, P.A. of 1970 and that the error of closure of the unadjusted field observation is within the limits established for the profession.
There are encroachments as shown.

Signed: Eugene L. Goss P.S.
Michigan No. 16040

LEGEND
Scale: 1" = 200'
W/E Indicates wetters edge
All dimensions are in feet
M Indicates measured
1/2" x 18" steel bar set.
Indicates corner monuments
Found unless noted
Indicates fence line
Indicates Section Corner

Project No. 010215
Drawn by DAD
Calculated by DAD
Field work HEG/DAD/2 Checked by: ELG
Dated: 04-13-01



NOTE:
PROPERTY SUBJECT TO STORMWATER
EASEMENT AGREEMENT AS DISCLOSED
IN L.3443, P.708-717

These documents are instruments of service in respect of the Project and any reuse without written verification or adaptation by Bartow & King Engineers, Inc. for the specific purposes intended will be at Users sole risk and users and owners including attorneys' fees arising out of or resulting therefrom. Any such verification or adaptation will entitle BKE to further compensation of rates to be agreed upon by User and BKE.	By	Date	Revisions
LANDFILL	Checked	DAD	Drawn
	Scale	1"=200'	Horizontal
	Field Survey	DAD	Scale
	Water Permit	Scale	Scale
	Water Permit	Scale	Scale
	Sewer Permit	Scale	Scale

By	Date	Revisions

DATE	DESCRIPTION
APRIL 2001 <td>Street Number</td>	Street Number
1 OF 1	

CERTIFIED BOUNDARY SURVEY
GENERAL MOTORS LANDFILL & RMA SITE
GENESEE TOWNSHIP, GENESEE COUNTY, MICHIGAN
FOR
ORRIEN & GERE ENGINEERS, INC. 39830 GRAND RIVER AVE., SUITE B-2 NOV, MI 48375

Bartow & King Engineers
2500 E. Midland Road, Bay City, Michigan 48706
Tel. (517) 684-8850
Fax. (517) 684-8404