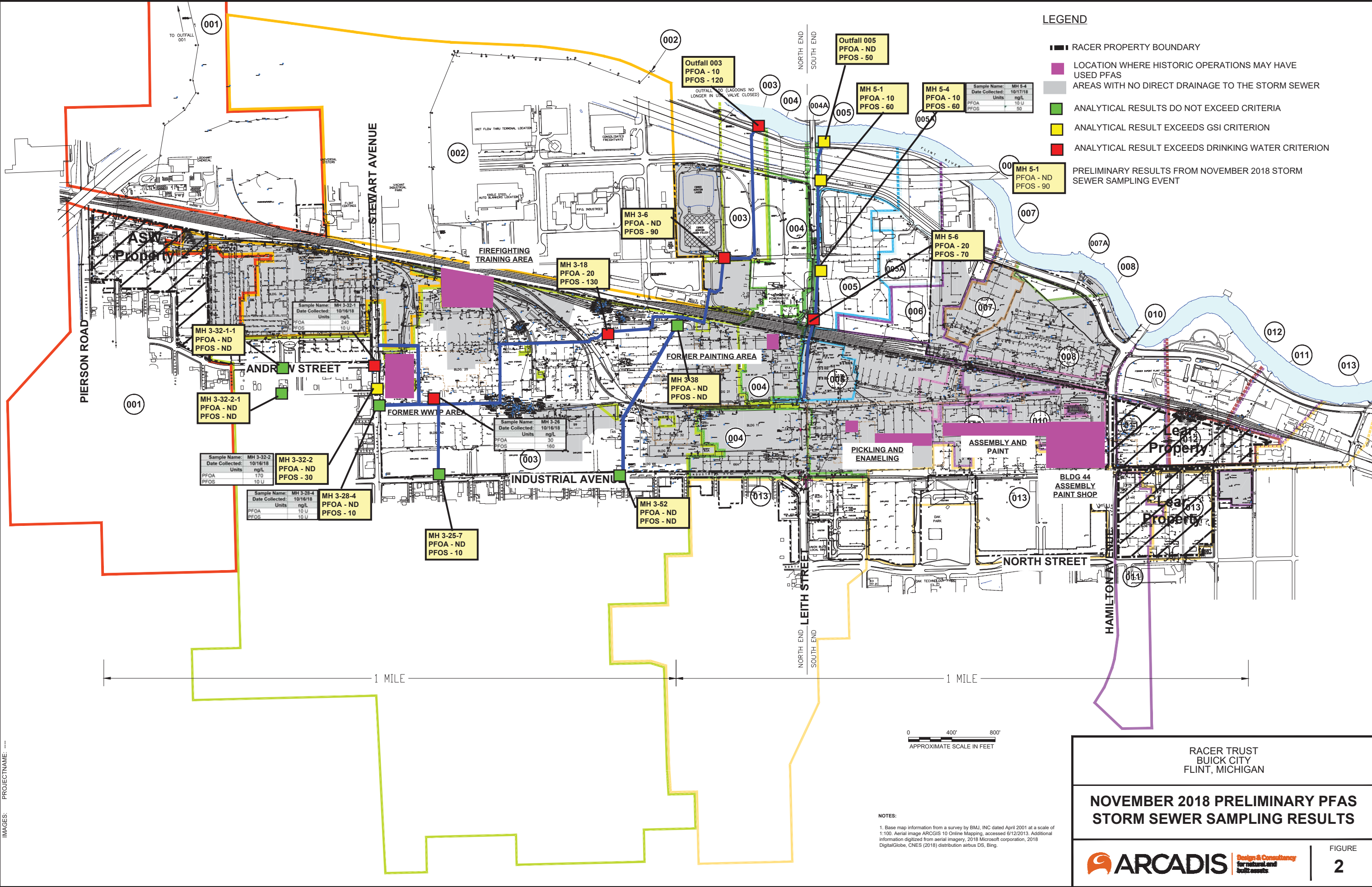


CITY: SYRACUSE DIV: GROUP: ENV DB: A. SANCHEZ ID: ALS/GMS PIC: C.S. PETERS LID: M.C. KIKER TM: C. KIKER LVR: ON=OFF=REF
 C:\Users\alsanone\OneDrive - ARCADIS\BIM 360 Docs\RACER TRUST\Bulk City RCRA\2018\B0064410\201701-DWG\RTBCF-SITEWIDE SS-MAP.dwg LAYOUT: 1. SAVED: 7/26/2018 11:45 PM ACADVER: 21 US (LMS TECH) PAGES: 10 PLOT: 7/26/2018 11:47 PM BY: SANCHEZ, ADRIAN
 IMAGES: PROJECTNAME: ---



LEGEND

- RACER PROPERTY BOUNDARY
- LOCATION WHERE HISTORIC OPERATIONS MAY HAVE USED PFAS
- AREAS WITH NO DIRECT DRAINAGE TO THE STORM SEWER
- ANALYTICAL RESULTS DO NOT EXCEED CRITERIA
- ANALYTICAL RESULT EXCEEDS GSI CRITERION
- ANALYTICAL RESULT EXCEEDS DRINKING WATER CRITERION

PRELIMINARY RESULTS FROM NOVEMBER 2018 STORM SEWER SAMPLING EVENT

Sample Name	Date Collected	Units	ng/L
MH 5-4	10/17/18	PFOA	10 U
MH 5-4	10/17/18	PFOS	50

NOTES:
 1. Base map information from a survey by BMJ, INC dated April 2001 at a scale of 1:100. Aerial image ARCGIS 10 Online Mapping, accessed 6/12/2013. Additional information digitized from aerial imagery, 2018 Microsoft corporation, 2018 DigitalGlobe, CNES (2018) distribution Airbus DS, Bing.

RACER TRUST
 BUICK CITY
 FLINT, MICHIGAN

**NOVEMBER 2018 PRELIMINARY PFAS
 STORM SEWER SAMPLING RESULTS**

ARCADIS Design & Consultancy
 for natural and built assets

FIGURE
2