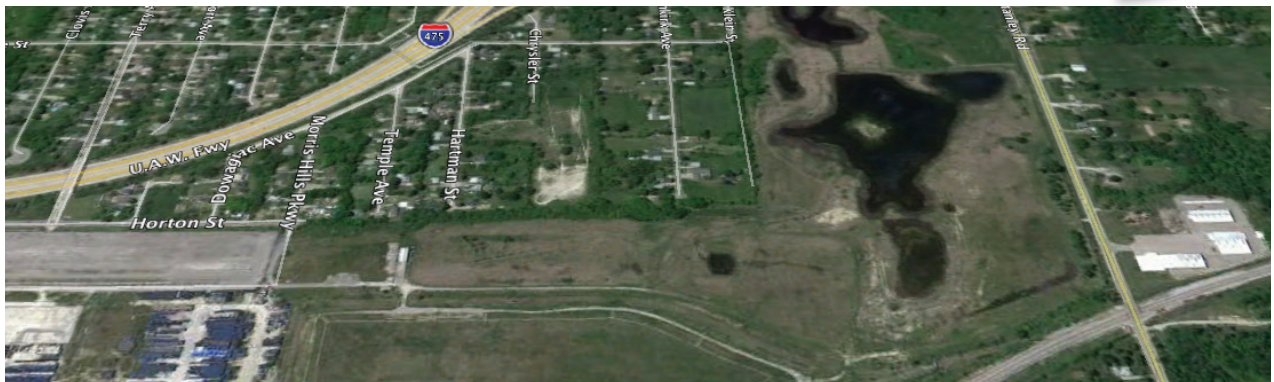




Solar Spotlight

Coldwater Road Landfill Genesee Township, MI



Acreage: 116.89

Zoning: I-2, Heavy Industrial

Property Description: Property includes an approximately 20-acre former wastewater treatment sludge landfill that was closed in 1994 in accordance with a closure plan approved by the Michigan Department of Environmental Quality. It is adjacent to a railroad and approximately one mile from Interstate 475.

Marketing Brochure: bit.ly/coldwatermi

Potential Customers/Partners: An electric substation is northeast of the property, across railroad tracks and Stanley Road.

Michigan Solar at a Glance:

- Renewable Energy Standard (RPS): Goal of 10% by end of 2015, applicable to investor-owned, cooperative and municipal electric utilities, and alternative suppliers.
- Michigan Solar Funding Platform: Encourages renewable energy development by connecting investors to Michigan projects. Provided by Great Lakes Renewable Energy Association (GLREA) and Localstake Marketplace LLC.

Incentives for Industrial/Commercial Consumers, Developers:

- Businesses engaged in alternative energy research, development and manufacturing may claim a nonrefundable credit from the Michigan business tax. Certification by the Michigan Next Energy Authority is required (bit.ly/michnea).
- Lean & Green Michigan™ (bit.ly/lgmich) helps qualified commercial, industrial and multi-family property owners finance energy projects.
- Michigan Incentive Renewable Energy Credits (IRECs): Michigan incentive RECs are available for manufacturing, installation, advanced energy storage, and on-peak production.

Net Metering & Interconnection Policies:

- Net metering system capacity limit of 150 kW for non-residential systems. (bit.ly/dsiremi-incentives)

Additional Resources:

Michigan Public Service Commission:
bit.ly/michpsc

Database of State Incentives for
Renewables & Efficiency: bit.ly/dsiremi

Consumers Energy: bit.ly/consumeren